

# OEM Colour Code Locations Model Information with Label Examples



## ALFA ROMEO



| MODEL                                    | POSITION OF COLOUR LABEL               |
|--|--|
| BRERA - MITO - GTV - SPIDER<br>GIULIETTA | ON THE ENGINE COMPARTMENT COVER        |
| 159 - 147 - MI.TO                        | ON THE TAILGATE OF LUGGAGE COMPARTMENT |

COLOUR CODE

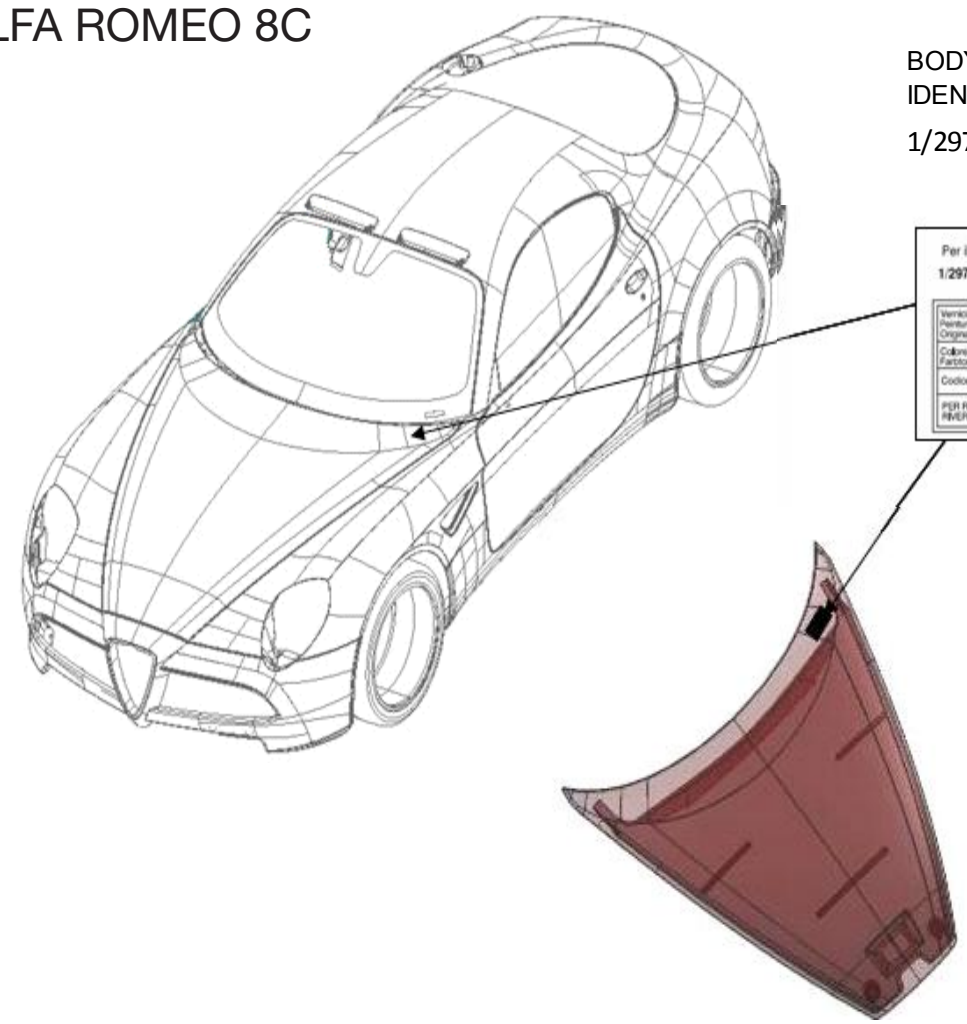


|   |   |   |
|---|---|---|
| Verniciatura originale<br>Peinture originale / Original painting<br>Originallackierung / Pintado original |   |  |
| Colore/Teinte/Colour<br>Farbton/Color   | AZZURRO POLIZIA HWB                       |   |
| Codice/Code/Codigo  | 917                                       |   |
| PER RITOCCHI<br>USARE PRODOTTI  | PPG REFINISH<br>NEXA AUTOCOLOR · MAXMEYER |   |



# ALFA ROMEO 8C

BODY PAINT SUPPLIER  
IDENTIFICATION PLATE  
1/29730/80 FIAT List /Table 19309



Per il fornitore PPG il pin FIAT è :  
1/29730/80 Tabella 19309 Foglio 2

|                                     |                      |
|-------------------------------------|----------------------|
| Vernicatura originale               | <input type="text"/> |
| Pinchur originale/Original painting | <input type="text"/> |
| Originalokunung/Prisado original    | <input type="text"/> |
| Colore/Teinte/Color                 | <input type="text"/> |
| Farbe/n Color                       | <input type="text"/> |
| Codice/Code/Codigo                  | <input type="text"/> |
| PER RIFOCCHÉ E RINVERNATURE         | <input type="text"/> |



## ASTON MARTIN



ASTON MARTIN

| MODEL      | POSITION OF COLOUR LABEL |
|------------|--------------------------|
| ALL MODELS | UNDER THE BONNET         |

COLOUR CODE



PICTURE NOT CURRENTLY AVAILABLE

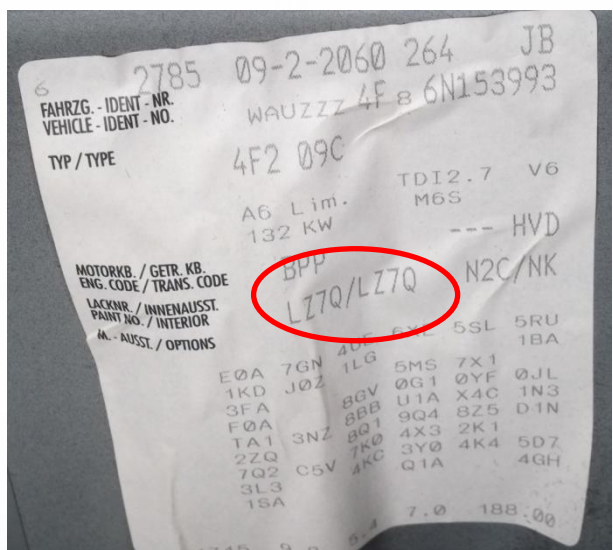


# AUDI



| MODEL      | POSITION OF COLOUR LABEL       |
|------------|--------------------------------|
| ALL MODELS | INSIDE THE LUGGAGE COMPARTMENT |

COLOUR CODE



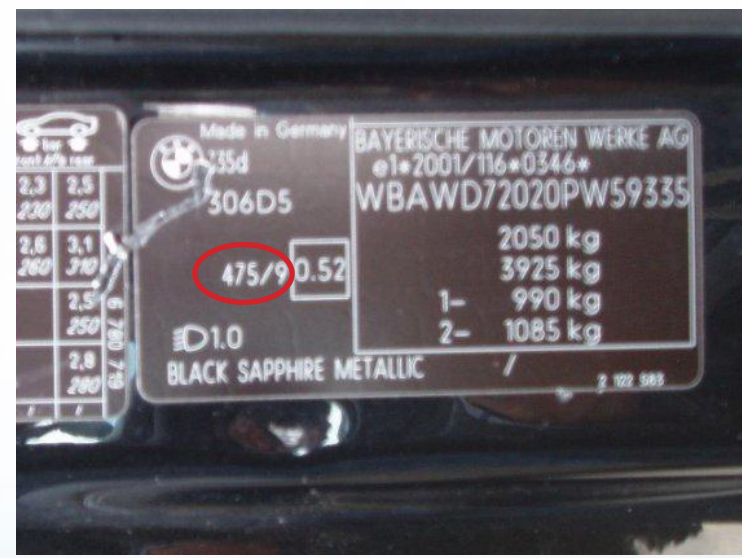


# BMW



| MODEL             | POSITION OF COLOUR LABEL              |
|-------------------|---------------------------------------|
| 1 - 3 - 5 - 6 - 7 | ON THE COLUMN / POST DRIVER SIDE DOOR |
| X3 - X5 - Z4      | INSIDE THE ENGINE COMPARTMENT         |

COLOUR CODE

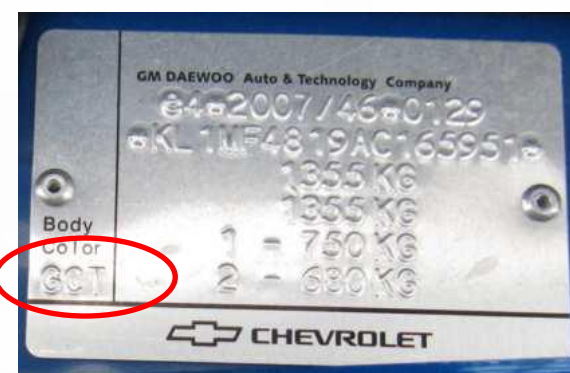


## CHEVROLET



| MODEL  | POSITION OF COLOUR LABEL      |
|--|-------------------------------|
| AVEO - CAPTIVA- MATIZ - SPARK<br>EPICA - LACETTI - NUBIRA<br>KALOS | INSIDE THE ENGINE COMPARTMENT |
| HRR  | IN THE GLOVE COMPARTMENT      |

COLOUR CODE



HRR

LABEL

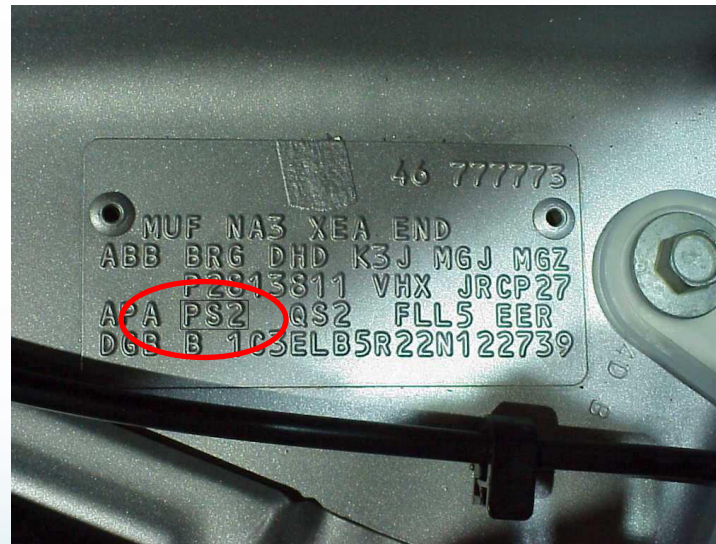


## CHRYSLER



| MODEL  | POSITION OF COLOUR LABEL          |
|--|-----------------------------------|
| NEON - SEBRING - STRATUS<br>CABRIO - VOYAGER | INSIDE THE ENGINE COMPARTMENT     |
| PT CRUISER                                   | ON THE INSIDE OF THE FRONT BUMPER |
| CHEROKE                                      | ON THE INSIDE OF THE REAR BUMPER  |

COLOUR CODE





## CITROEN



| MODEL  | POSITION OF COLOUR LABEL              |
|--|---------------------------------------|
| C-CROSSER - NEMO - JUMPER                    | INSIDE THE ENGINE COMPARTMENT         |
| C2-C3-C3 PLURIEL- C3 PICASSO<br>C4 - C5 -DS3 | ON THE COLUMN / POST DRIVER SIDE DOOR |
| C4 PICASSO - C8 - JUMPY                      | ON THE DRIVER SIDE DOOR SHUT          |
| C1   | INSIDE OF COLUMN, RIGHT SIDE DOOR     |

COLOUR CODE



## DACIA



| MODEL      | POSITION OF COLOUR LABEL          |
|------------|-----------------------------------|
| ALL MODELS | INSIDE OF COLUMN, RIGHT SIDE DOOR |

COLOUR CODE

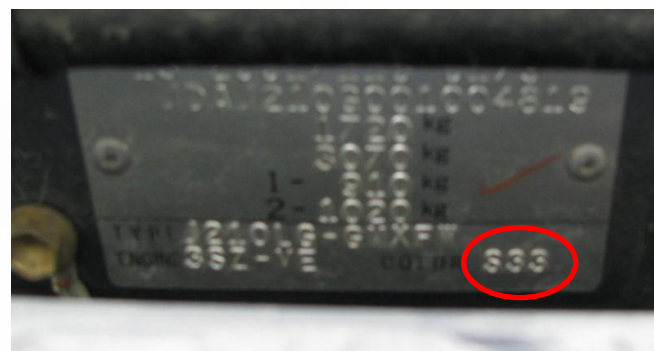


## DAIHATSU



| MODEL  | POSITION OF COLOUR LABEL      |
|--|-------------------------------|
| CUORE - MATERIA - TERIOS<br>YRV - SIRION - COPEN | INSIDE THE ENGINE COMPARTMENT |

COLOUR CODE



## FERRARI



| MODEL      | POSITION OF COLOUR LABEL                     |
|------------|--|
| ALL MODELS | INSIDE THE ENGINE COMPARTMENT (UNDER BONNET) |

COLOUR CODE

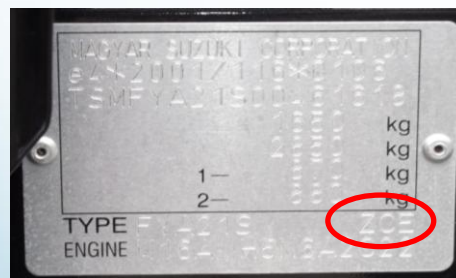


## FIAT



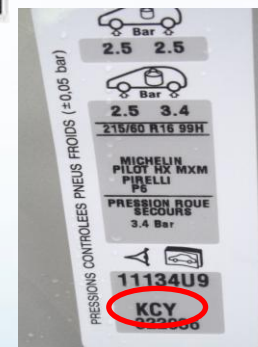
| MODEL  | POSITION OF COLOUR LABEL                       |
|--|--|
| BRAVO - CROMA - PUNTO                                | ON THE ENGINE COMPARTMENT COVER (UNDER BONNET) |
| DOBLO' - DUCATO - SCUDO<br>QUBO - SEDICI - IDEA      | INSIDE THE ENGINE COMPARTMENT                  |
| STILO - 500 - 600 - PANDA<br>MULTIPLA - GRANDE PUNTO | INSIDE THE REAR / LUGGAGE COMPARTMENT          |
| NUOVO SCUDO - ULYSSE                                 | ON THE DRIVER SIDE DOOR EDGE                   |
| SEDICI - STRADA                                      | ON THE INSIDE EDGE OF PASSENGER SIDE DOOR      |

|   |   |  |
|---|---|--|
| Verniciatura originale<br>Peinture originale / Original painting<br>Originallackierung / Pintado original |   |  |
| Colore/Teinte/Color<br>Farbton/Color  | BIANCO GIOIOSO                          |  |
| Codice/Code/Codigo  | 270/A                                   |  |
| PER RITOCCHI<br>USARE PRODOTTI  | PPG REFINISH<br>NEXA AUTOCOLOR MAXMEYER |  |



FIAT SEDICI  
COLOUR CODE SUZUKI

FIAT ULYSSE  
COLOUR CODE PSA



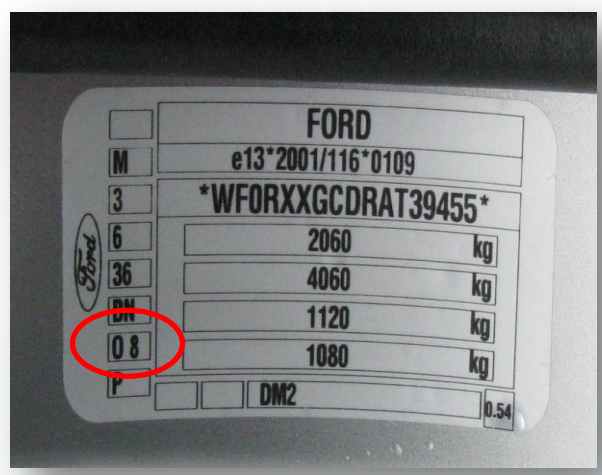


# FORD



| MODEL   | POSITION OF COLOUR LABEL                    |
|---|---|
| FIESTA - KA - FUSION - FOCUS<br>S MAX - C MAX - KUGA<br>FOCUS COUPE'(PININFARINA) | ON THE INSIDE OF THE RIGHT SIDE DOOR COLUMN |

COLOUR CODE



# HONDA



| MODEL   | POSITION OF COLOUR LABEL              |
|---|---------------------------------------|
| ACCORD - JAZZ - CR V - FR V<br>S2000 - STREAM CIVIC | INSIDE THE ENGINE COMPARTMENT         |
| CIVIC - INSIGHT - LOGO - S2000<br>NSX               | ON THE COLUMN / POST DRIVER SIDE DOOR |

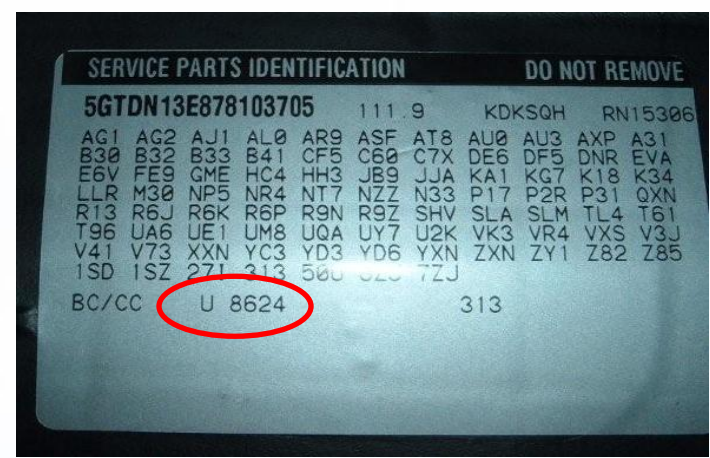
COLOUR CODE



# HUMMER

| MODEL      | POSITION OF COLOUR LABEL     |
|------------|------------------------------|
| ALL MODELS | INSIDE THE GLOVE COMPARTMENT |

COLOUR CODE  
(GMNA)

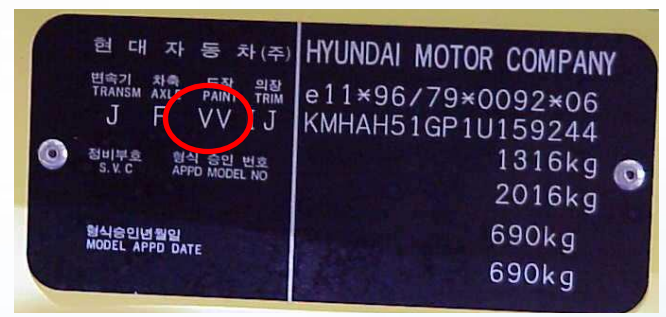


# HYUNDAI



| MODEL  | POSITION OF COLOUR LABEL              |
|--|---------------------------------------|
| ACCENT - ATOS PRIME - COUPE'<br>LANTRA - TRAJET - TERRACAN<br>SONICA | INSIDE THE ENGINE COMPARTMENT         |
| I10 - I30 - IX35 - IX55 -SANTA FE<br>TUCSON - MATRIX                 | ON THE COLUMN / POST DRIVER SIDE DOOR |
| I20  | ON THE EDGE OF DRIVER'S SIDE DOOR     |

COLOUR CODE

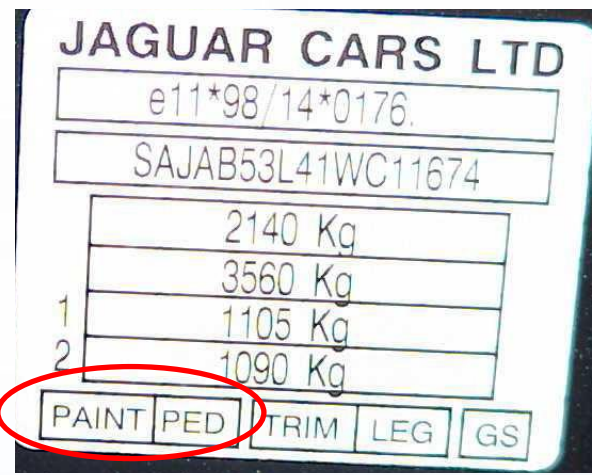


# JAGUAR



| MODEL                          | POSITION OF COLOUR LABEL                |
|--------------------------------|---|
| XJ                             | INSIDE THE ENGINE COMPARTMENT           |
| X TYPE - S TYPE - XJ - XF - XK | ON THE COLUMN / POST DRIVER'S SIDE DOOR |

COLOUR CODE





KIA



| MODEL  | POSITION OF COLOUR LABEL              |
|--|---------------------------------------|
| CARNIVAL - CARENS - SORENTO<br>SPORTAGE - SOUL       | INSIDE THE ENGINE COMPARTMENT         |
| SOUL   | ON THE INSIDE COLUMN RIGHT SIDE DOOR  |
| CARNIVAL - CEE'D - PICANTO<br>RIO - SPORTAGE - VENGA | ON THE COLUMN / POST DRIVER SIDE DOOR |

COLOUR CODE



## LAMBORGHINI



| MODEL                 | POSITION OF COLOUR LABEL            |
|-----------------------|-------------------------------------|
| GALLARDO - MURCIELAGO | INSIDE THE ENGINE COMPARTMENT COVER |

COLOUR CODE



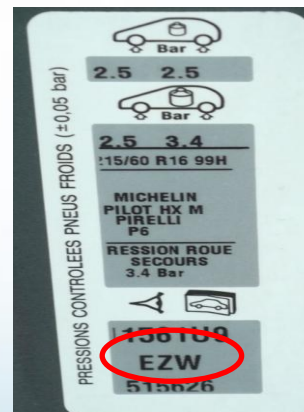
## LANCIA



| MODEL        | POSITION OF COLOUR LABEL            |
|--------------|-------------------------------------|
| DELTA - MUSA | INSIDE THE ENGINE COMPARTMENT COVER |
| Y            | INSIDE THE LUGGAGE COMPARTMENT      |
| PHEDRA       | ON EDGE OF DRIVER'S SIDE DOOR       |



LANCIA PHEDRA -  
COLOUR CODE PSA



## LAND ROVER



| MODEL  | POSITION OF COLOUR LABEL            |
|--|-------------------------------------|
| RANGE ROVER - RANGE ROVER<br>SPORT - DISCOVERY | INSIDE THE ENGINE COMPARTMENT       |
| FREELANDER                                     | ON THE COLUMN OF DRIVER'S SIDE DOOR |

COLOUR CODE



## MASERATI



| MODEL      | POSITION OF COLOUR LABEL                     |
|------------|--|
| ALL MODELS | INSIDE THE ENGINE COMPARTMENT (UNDER BONNET) |

COLOUR  
DESCRIPTION



|  |   |
|--|---|
|  | VERNICIATURA ORIGINALE<br>ORIGINAL PAINT<br><br><br><br><b>NERO CARBONIO</b> |
|  | TECNOLOGIA ALL'ACQUA<br>WATERBORNE TECHNOLOGY<br><br>PER RITOCCHI USARE/FOR REPAIR WORKS<br><b>PPG REFINISH</b>   |



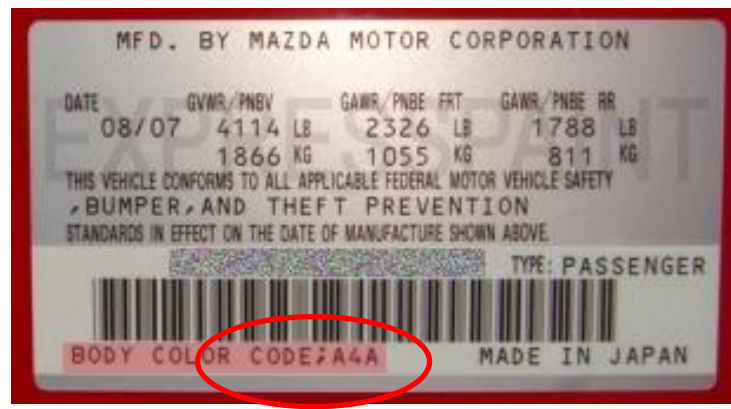


## MAZDA



| MODEL                  | POSITION OF COLOUR LABEL       |
|------------------------|--------------------------------|
| ALL MODELS BEFORE 1997 | ON THE DRIVER'S SIDE DOOR SHUT |
| ALL MODELS AFTER 1997  | INSIDE THE ENGINE BAY          |

COLOUR CODE



## MERCEDES



| MODEL      | POSITION OF COLOUR LABEL               |
|------------|--|
| ALL MODELS | ON THE FRONT PASSENGER SIDE DOOR COUMN |



COLOUR CODE



**MINI**



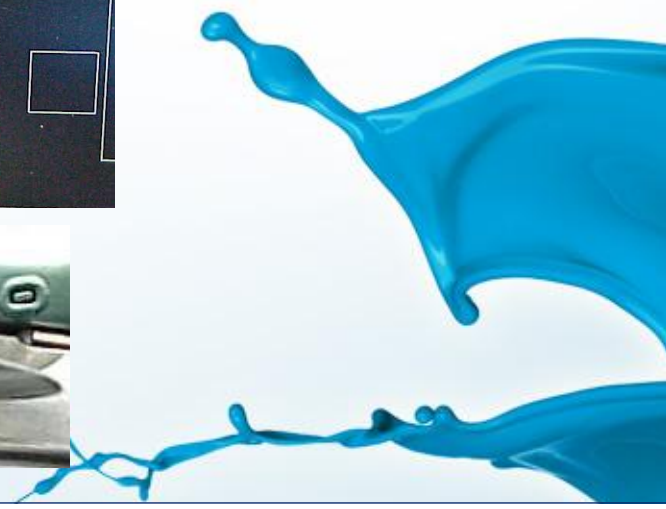
| MODEL                 | POSITION OF COLOUR LABEL          |
|-----------------------|-----------------------------------|
| ALL MODELS UP TO 2007 | INSIDE THE ENGINE COMPARTMENT     |
| ALL MODELS AFTER 2007 | ON THE PASSENGER SIDE DOOR COLUMN |



COLOUR CODE



COLOUR CODE



# MITSUBISHI



| MODEL   | POSITION OF COLOUR LABEL          |
|---|-----------------------------------|
| COLT - LANCER - OUTLANDER<br>PAJERO - L200 - PAJERO PININ | INSIDE THE ENGINE COMPARTMENT     |
| COLT - COLT CZC   | ON THE PASSENGER SIDE DOOR COLUMN |
| CANTER  | ON THE PASSENGER SIDE DOOR SHUT   |

COLOUR CODE

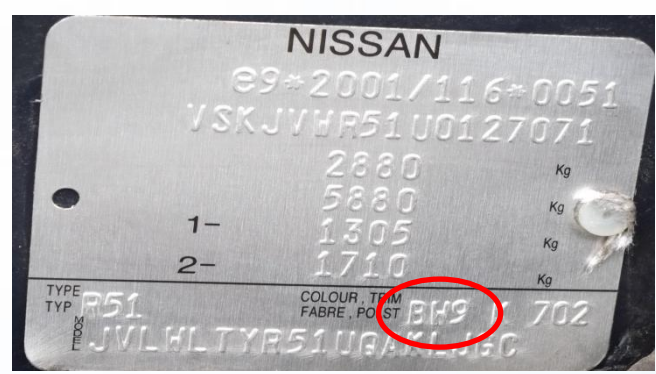


# NISSAN



| MODEL                                       | POSITION OF COLOUR LABEL          |
|---|-----------------------------------|
| PIXIO - CUBE - JUKE - 370Z<br>GT R - MURANO | NOT KNOWN                         |
| NOTE - MICRA - QASHQAI                      | ON THE PASSENGER SIDE DOOR COLUMN |
| PATHFINDER - X TRAIL - PATROL               | INSIDE THE ENGINE COMPARTMENT     |

COLOUR CODE





## OPEL



| MODEL                                      | POSITION OF COLOUR LABEL                       |
|--|--|
| AGILA                                      | ON THE COLUMN / POST DRIVER'S SIDE DOOR        |
| ZAFIRA - CORSA - ASTRA<br>INSIGNA - VECTRA | ON THE COLUMN / POST PASSENGER SIDE FRONT DOOR |
| ANTARA - CORSA - MERIVA<br>SIGNUM          | INSIDE THE ENGINE COMPARTMENT                  |

COLOUR CODE





# PORSCHE



| MODEL                       | POSITION OF COLOUR LABEL       |
|-----------------------------|--------------------------------|
| ALL MODELS (EXCEPT CAYENNE) | ON THE DRIVER'S SIDE DOOR EDGE |
| CAYENNE                     | INSIDE THE BOOT                |

COLOUR CODE



COLOUR CODE  
CAYENNE



## RENAULT

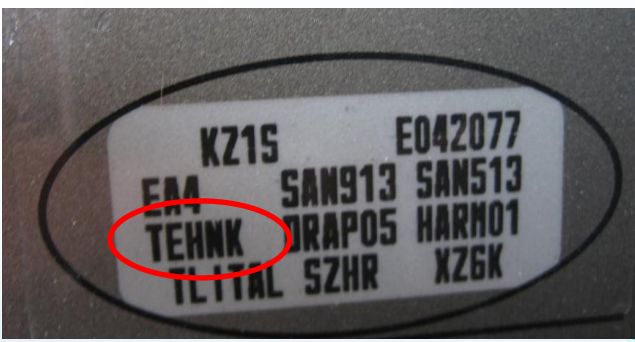


| MODEL      | POSITION OF COLOUR LABEL          |
|------------|-----------------------------------|
| ALL MODELS | ON THE PASSENGER SIDE DOOR COLUMN |

COLOUR CODE



COLOUR CODE

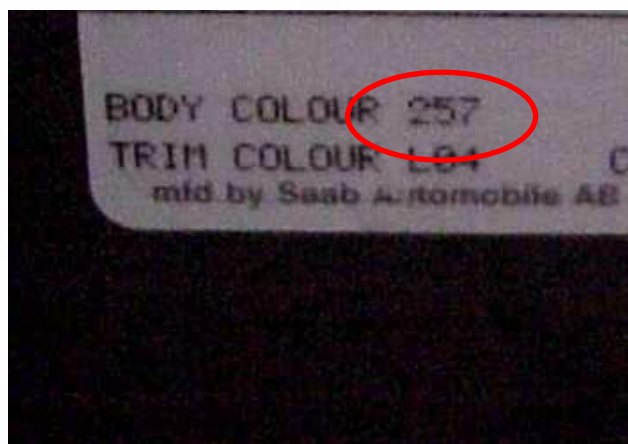


## SAAB



| MODEL                   | POSITION OF COLOUR LABEL  |
|-------------------------|---------------------------|
| ALL MODELS (EXCEPT 9-5) | IN THE GLOVE COMPARTMENT  |
| 9-5                     | ON THE DRIVER'S DOOR SHUT |

COLOUR CODE

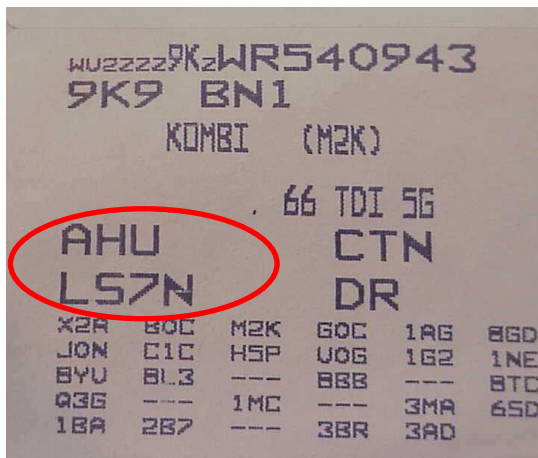


# SEAT



| MODEL      | POSITION OF COLOUR LABEL |
|------------|--------------------------|
| ALL MODELS | IN THE BOOT              |

COLOUR CODE

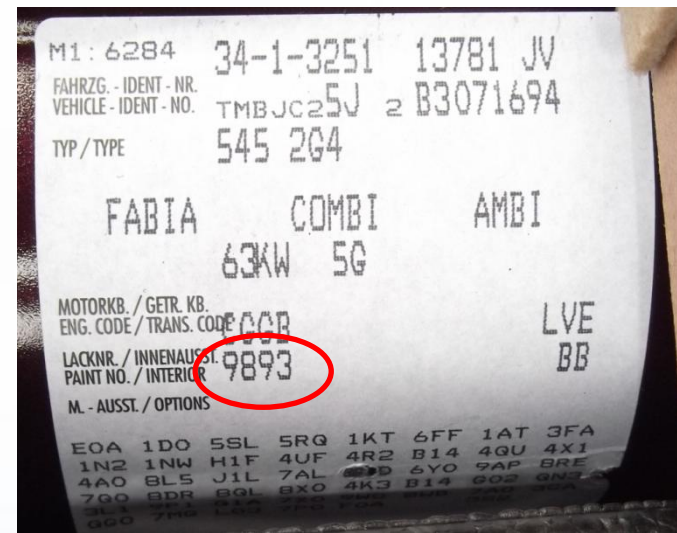




# SKODA



| MODEL      | POSITION OF COLOUR LABEL |
|------------|--------------------------|
| ALL MODELS | IN THE BOOT              |



COLOUR CODE

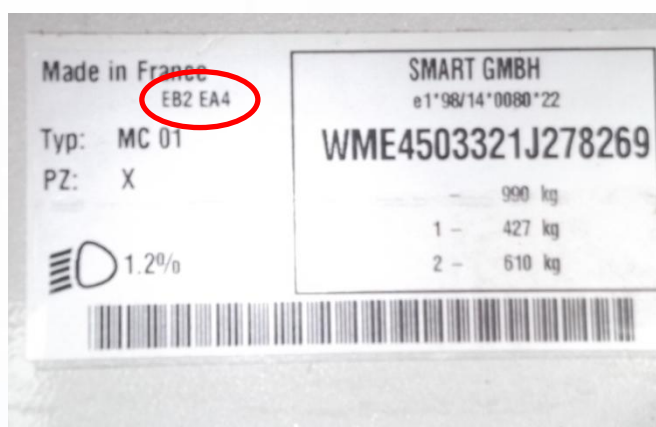


## SMART



| MODEL                         | POSITION OF COLOUR LABEL             |
|-------------------------------|--------------------------------------|
| FORTWO (Old Model)            | INSIDE THE ENGINE COMPARTMENT (REAR) |
| FORTWO (New Model)<br>FORFOUR | ON THE PASSENGER SIDE DOOR COLUMN    |

COLOUR CODE

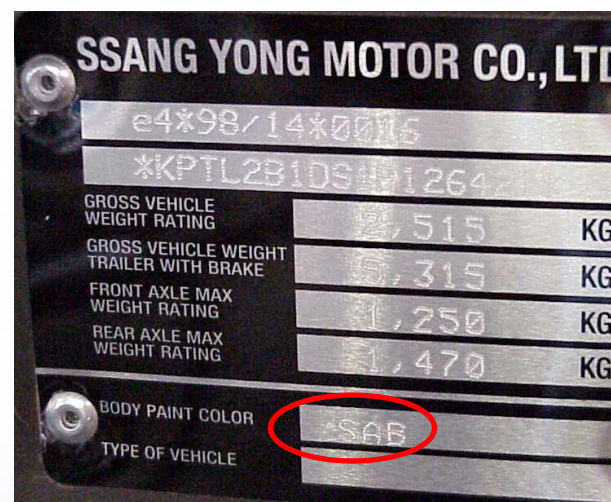
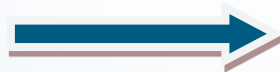


## SSANG YONG



| MODEL                               | POSITION OF COLOUR LABEL      |
|-------------------------------------|-------------------------------|
| KORANDO - MUSSO - REXTON            | INSIDE THE ENGINE COMPARTMENT |
| ACTYON - KYRON - REXTON 2<br>RODIUS | ON THE DRIVER'S DOOR COLUMN   |

COLOUR CODE

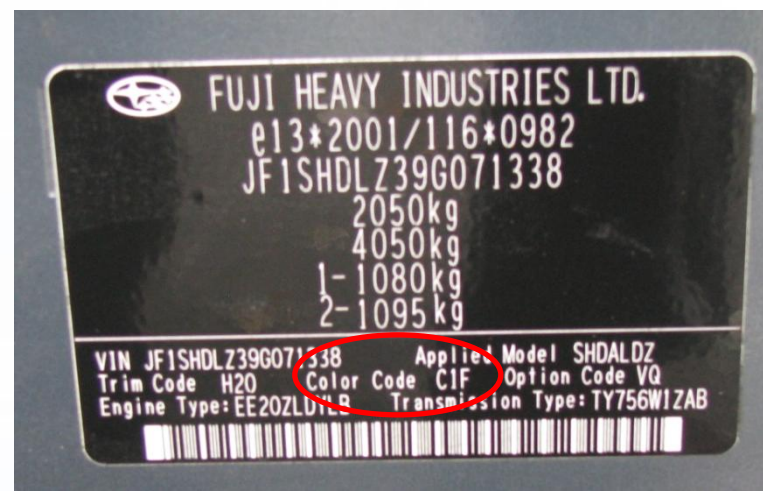


## SUBARU



| MODEL              | POSITION OF COLOUR LABEL                |
|--------------------|---|
| FORESTER - OUTBACK | ON THE COLUMN / POST DRIVER'S SIDE DOOR |

COLOUR CODE

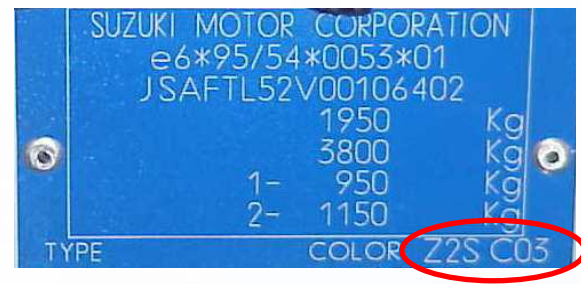


# SUZUKI

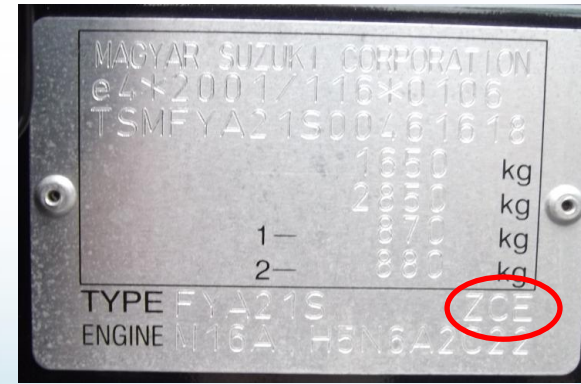


| MODEL                                | POSITION OF COLOUR LABEL                |
|--------------------------------------|---|
| SPLASH - SWIFT                       | ON THE COLUMN / POST DRIVER'S SIDE DOOR |
| GRAN VITARA - JIMNY<br>VAGON - R SX4 | INSIDE THE ENGINE COMPARTMENT           |
| SX4 - ALTO - CARRY                   | ON THE PASSENGER SIDE DOOR COLUMN       |

COLOUR CODE



COLOUR CODE

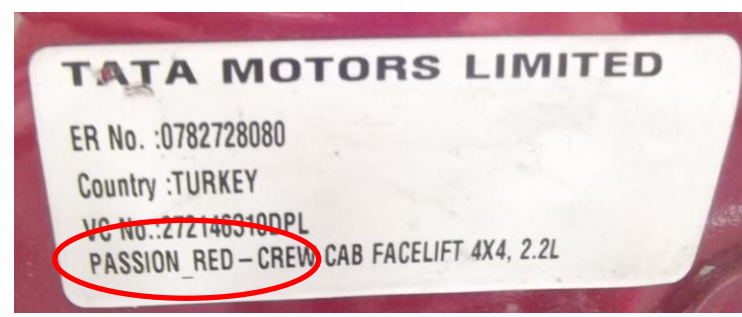


# TATA



| MODEL      | POSITION OF COLOUR LABEL                |
|------------|---|
| ALL MODELS | ON THE ENGINE COMPARTMENT HOOD (bonnet) |

COLOUR DESCRIPTION



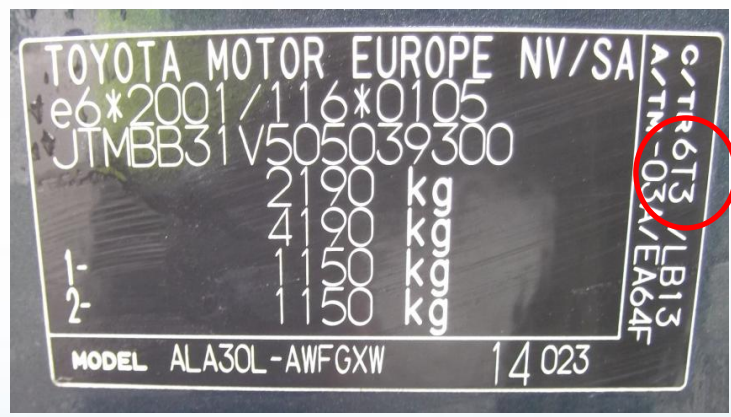


# TOYOTA



| MODEL   | POSITION OF COLOUR LABEL          |
|---|-----------------------------------|
| AYGO - AURIS  | ON THE PASSENGER SIDE DOOR COLUMN |
| RAV 4 - YARIS - IQ - COROLLA                                  | ON THE DRIVER'S DOOR COLUMN       |
| AVENSIS   | ON THE DRIVER'S DOOR SHUT         |
| RAV4 - AVENSIS - YARIS VERSO<br>HILUX - HIACE<br>LAND CRUISER | INSIDE THE ENGINE COMPARTMENT     |

COLOUR CODE



# VOLVO



| MODEL  | POSITION OF COLOUR LABEL               |
|--|--|
| XC90 - C70 - S40 - S60<br>S70 - S80 -V40 - V70 | INSIDE THE ENGINE COMPARTMENT          |
| C30 - S40 - V50 - XC70                         | ON THE REAR PASSENGER SIDE DOOR COLUMN |

COLOUR CODE



# VOLKSWAGEN



| MODEL       | POSITION OF COLOUR LABEL              |
|-------------|---------------------------------------|
| TOURAN 2010 | INSIDE THE BOOK "Use and Maintenance" |
| ALL MODELS  | INSIDE THE BOOT                       |

COLOUR CODE

