

SWISS WAXMAKERS SINCE 1930



**SWISSVAX™**  
HIGH PERFORMANCE CAR CARE  
HAND MADE IN SWITZERLAND

# HANDBOOK



WHEELS AND TYRES

CONVERTIBLE TOPS

WASHING

PLASTICS AND RUBBER

PAINTWORK AND METAL CARE

WINDOWS AND INTERIOR FITTINGS

QUICK CARE AND CONDITIONING



HIGH F

HAND



[WWW.SWISSVAX.COM](http://WWW.SWISSVAX.COM)

---

[WWW.SWISSVAX.CO.UK](http://WWW.SWISSVAX.CO.UK) · [WWW.SWISSVAX.US](http://WWW.SWISSVAX.US)

**Product finder**

3

Alcanta Cleaner	57	<b>Paintwork preparation</b>	<b>29–39</b>
Autobahn	10	Pneu	12
Car Bath	21	Protecton	22
Cleaner Fluid Regular	29	Protecton matt	22
Cleaner Fluid Medium	32	<b>Quick care</b>	<b>66–69</b>
Cleaner Fluid Strong	34	Quick Finish	66
Cleaner Fluid Professional	36	Quick Interior Finish	67
Cleaning Brush	58	Rain-X	54
Crystal	54	Smart-Bucket	20
Elephant Museum Formula	63	Special waxes	45–49
Engine	18	<b>The art of formulation</b>	<b>40</b>
Fabric for fabric tops	15	<b>The Swissvax concept</b>	<b>27</b>
Fabric textile cleaner	56	Universal waxes	42–44
Fabric top protection	14	Vinyl Clean	16
Hydralip	20	Vinyl Clear	16
Leather brush	58	Waschpudel™	20
<b>Leather care</b>	<b>58–64</b>	Wax 356	49
Leather Cleaner	58	Wax Blau-Weiss	45
Leather Cleaner Forte	58	Wax Concorso	43
Leather dye	60	Wax Crystal Rock	44
Leather Glaze	61	Wax Divine	44
Leather Gloss Corrector	62	Wax Glacier	48
Leather Healer	60	Wax Mirage	42
Leather Milk	59	Wax Mystery	43
Leather preserver	63	Wax Nitro	49
Leather sanding pad	64	Wax Onyx	42
Leather Softener	64	Wax Reflexus	47
<b>Maintenance schedule</b>	<b>28</b>	Wax Samurai	47
Matt paintwork	50	Wax Scuderia	46
Metal Polish	52	Wax Shield	48
Motor Shine	18	Wax Viking	46
Nano Express	68	Wax Zuffenhausen	45
Opaque line for matt paintwork	50	<b>Wax application</b>	<b>40</b>
Paint Rubber	31	<b>Wax Shield application</b>	<b>41</b>
		Wheel	8
		Whitewall tyres	13
		Wheel Spray Forte	8
		Wood Polish	65

## WAX MANUFACTURERS SINCE 1930

Swissvax is a comprehensive car care system. It consists of integrated washing, cleaning and nourishing products.

Like many unique products, our waxes were originally designed around the family kitchen table. The old Anwander chemist's shop in Zurich was both the laboratory and the production site for the first tins of "Antikwachs" – a wax formulation specially developed for antique furniture and lacquers.

Since producing those first tins of precious "Antikwachs", the Anwander family has devoted itself to paints, lacquers and waxes for over three generations. The natural waxes for cars were originally produced solely for the use of Hans Anwander, the grandfather and the founder of the company. Over the years, the original formulations have been continually developed in response to customer needs, environmental requirements and technological changes.

The Swissvax products are still blended and each tin filled exclusively by hand to this day. The high-quality ingredients and the complex formulas do not permit industrial production.

In our passion to manufacture the best waxes and care products, we simply refuse to make any compromises.

We invite you to experience what it is that makes our products so famous throughout the world.



## PASSION

The Swiss reputation for quality and precision is echoed in our products. For over three generations, we at Swissvax have been dedicated car enthusiasts and collectors. Our unique products do not have to meet sales targets or a production budget, which is what makes them what they are today – top-quality care products from perfectionists for perfectionists.





## THE DIFFERENCE

5

Unlike conventional polishes, Swissvax waxes do not contain abrasives and can be used on all types of paintwork, including old nitro lacquers, modern water-based paint systems and so-called nanopaints.

The Swissvax system consists of two components: a cleaning prewax oil and the wax itself. The waxes are easy and pleasant to apply. No white residue is left and the waxes do not build up on rubber seams or along edges.

Carnauba is the world's hardest, purest, most transparent and also most expensive natural wax. It is harvested from the upper side of the leaves of the «Copernicia prunifera», a fan palm native to Northern Brazil, and is graded according to colour and clarity. The highest quality is classified as rare grade-one carnauba and is used in our Swissvax waxes. The level of shine increases with the percentage of carnauba used in a wax formulation. While conventional car waxes have a carnauba wax content of about 3 to 5%, Swissvax formulations contain 30% to over 76% by volume (one of the highest concentrations available on the market).

Unlike ordinary polishing waxes that simply polish a paint surface shiny, while the lower layers of paint dry out and slowly "starve", the Swissvax carnauba formulations, enriched with passion fruit, orange, avocado and vanilla oils, restore the deep shine to the paintwork, resulting in an intense, unique "wet look" which has long been the delight of collectors and enthusiasts around the world.



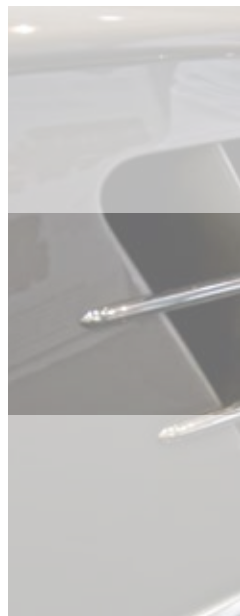
## MIRROR-LIKE SURFACES

We firmly believe that regular car care must be easy car care. We have therefore developed unique products that will help our customers to return their four-wheeled investment to showroom appearance in a relatively short time.

Enthusiasm and the use of the correct care products alone are still no guarantee for good results. To achieve the desired effect, it is important that the products are applied in the right sequence and using special care techniques.

On the following pages we will share with you our recommendations for the optimum care of your car. To avoid unnecessary effort, we recommend that you follow these instructions carefully.

Trust our know-how and our Swissvax products and your car will appear exactly the way you want it – perfect!



SWISS WAXMAKERS SINCE 1930



**SWISSVAX™**  
HIGH PERFORMANCE CAR CARE  
HAND MADE IN SWITZERLAND



Manufacturer for  
Mercedes-Benz  
Classic Collection



Manufacturer for  
Spyker Cars N.V.  
car care kit



Manufacturer for  
Rolls-Royce Motorcars  
car care kit



Manufacturer for  
Automobili Lamborghini  
car care kits



## WHEELS FIRST

8

WHEEL



### Before washing

In order to ensure that your precious efforts of washing the car are not ruined immediately by soiling them from wheel cleaning, always start by cleaning the wheels.

### Wheel cleaning

Brake dust which consists of aggressive metallic particles can cause permanent damage to the surface of your rims. This is why you should never forget the wheels when washing the car. Only thorough and regular care of your wheels will ensure that your rims remain spotless eyecatchers on your vehicle.

WHEEL SPRAY FORTE



### Modern

Swissvax Wheel Spray Forte is a modern, extremely powerful wheel cleaner with a coloured action indicator. Acid free (!) and nearly pH-neutral it is safe for aluminium wheels, painted wheels as well as spoke wheels.







**INSTRUCTIONS FOR USE**

1. Rinse the wheels thoroughly with a powerful water jet.
2. Fill a Swissvax Mixing Bottle with Wheel-concentrate to the mark «1». Add water (to «1:1» for heavily soiled, up to «1:2» or «1:3» for normally soiled wheels).
3. Mist wheels graciously and immediately clean them with a Swissvax wheel brush and/or a Micro-Wash microfibre towel (yellow).
4. Thoroughly rinse the wheels with a powerful water jet and dry them after washing the car.



**INSTRUCTIONS FOR USE**

1. Mist wheels graciously with it. A built-in action indicator will turn red-violet in colour after the active cleaning process.
2. Rinse wheels with fresh water and strong pressure. Ready!
3. Dry the wheels after washing the car.





## SPARKLING RIMS

AUTOBAHN



### WHAT IS PTFE?

Polytetrafluoroethylene (PTFE) resin belongs to the class of paraffinic polymers that have some or all of the hydrogen replaced by fluoride. The original PTFE resin was invented by DuPont in 1938.

PTFE is a completely fluorinated polymer manufactured by free radical polymerization of tetrafluoroethylene. With a linear molecular structure of repeating  $-CF-CF_2-$  units, PTFE is a crystalline polymer with a melting point of approximately 621°F (327°C). Its density is 2.13 to 2.19 g. PTFE has exceptional resistance to chemicals. Its coefficient of friction is lower than almost any other material.

### Endurance test

Originally, this product was developed for German customers with fast motor cars with alloy or magnesium wheels. The product has been tested on German motorways (Autobahns) at speeds of more than 300 km/h, in Switzerland on the heavily salted roads during the winter months and on race tracks in Germany and Austria.

### Wheel wax

Swissvax Autobahn Wheel Wax enhances the surface of your wheels with a visible smooth shine and helps repel dirt. Brake dust, road salt, moisture and other road contaminants can hardly penetrate the protective coating of heat-resistant carnauba wax enhanced with PTFE<sup>1</sup>. Wheel cleaning will take only a fraction of the time it used to take. Swissvax Autobahn Wheel Wax can be used safely on aluminium, polished aluminium, coated aluminium, magnesium, chrome or coated surfaces and on vehicles that have ceramic brakes.



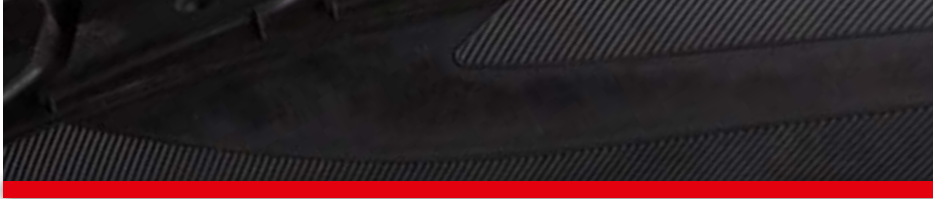


11

**INSTRUCTIONS FOR USE**

1. Clean wheels thoroughly (as described in "Wheels first").
2. New wheels need to be pretreated with Swissvax Cleaner Fluid Regular, used wheels with the Paint Rubber and Cleaner Fluid Regular (see index).
3. Apply Autobahn wheel wax evenly using a Swissvax Puck applicator (black).
4. Allow it to cure for 10 minutes.
5. Polish to a high gloss with a Swissvax MicroPolish microfibre cloth (blue).  
Keep turning the cloth to expose a clean surface.





## TYRE-CHECK

PNEU



### Jet-black tyres

As every concours d'élégance participant knows, shiny tyre walls are a must! Jet-black tyres with a natural sheen add the finishing touch to an immaculately kept vehicle. There are various ways to achieve this finish: some are relatively easy, while others require more effort. The main thing, however, is to ensure that what you do is good for the tyres and causes no damage.

### Pneu

Swissvax Pneu is an emulsion consisting of gloss agents and preservatives. It replenishes moisture lost from the rubber compound and protects the surface from discoloration and cracking. Swissvax Pneu couldn't be easier to apply and is guaranteed to not harm your tyres, rims or paintwork. Swissvax Pneu is suitable both for standard black and for whitewall tyres.

### CARE TIP

On windy days we recommend that you apply Swissvax Pneu with a Swissvax Pneu-Brush or a Swissvax Puck applicator (black). Spraying it directly onto tyre walls could lead to residue being left on the paintwork.





### Whitewall tyres

Some vintage and classic cars look their best with whitewall tyres.

However, these elegant tyres are not easy to clean, and inadvertent contact with kerbstones can leave permanent marks.

#### Pneu White

Pneu White is a powerful whitewall tyre cleaner which removes dirt and yellow discoloration. However, dark brown staining (usually seen on post-vulcanised whitewalls) cannot usually be completely eliminated.

### USING PNEU

1. Wash tyres and allow them to dry.
2. Mist Swissvax Pneu onto tyre surfaces or apply Swissvax Pneu with a Swissvax Tyre-Brush or Wax Applicator (black).
3. Allow to work in for five minutes. The milky white film will turn a deep black.
4. Use a clean Swissvax Cloth to wipe off any overspray or residues on wheel rims, wheel trims or chrome spokes.

#### IMPORTANT

Do not use on motorcycle tyres due to risk of skidding!

### USING PNEU WHITE

1. Use rubber gloves and eye protection.
2. Mist Pneu White onto the Pneu White applicator provided.
3. Clean the whitewall thoroughly with the moist pad and rinse with clean water. It may be necessary to repeat this process to remove stubborn dirt/discolouring.
4. Let the tyres dry and then spray with Pneu White wheel emulsion.





## FABRIC TOPS

14

FABRIC



### Convertible fabric tops

Fabric tops do not need a complete clean each time the car is washed. Never use washing detergents or other cleaning agents intended for the kitchen or bathroom, as these will bleach the rubber and the waterproofing of the roof. Only use specially designed tested products, such as Swissvax Fabric, to clean and care for your convertible fabric top.

## VINYL TOPS

PROTECTON



### Vinyl tops

Vinyl tops are less susceptible to bleaching and the effects of dust. If necessary, cars with vinyl roofs can be washed in an automatic car wash, provided the top has a glass rear window. Light-coloured roofs in particular should still be cleaned every week to ensure that dirt has no chance to get established. It is important not to use alkaline cleaning agents for this purpose, as they soften the special adhesives used to waterproof the top's seams. We recommend that you use Swissvax Vinyl Clean, together with a Swissvax Cleaning Brush and a Swissvax MicroWash microfibre cloth (yellow).



## INSTRUCTIONS FOR USE

1. Fill a Swissvax Mixing Bottle to the «1:2» mark with carbonated mineral water.
2. Add Swissvax Fabric concentrate up to the «1:3» mark.
3. Gently shake the Mixing Bottle.
4. Spray the Swissvax Fabric solution evenly over the area you are treating and use a Swissvax Cleaning Brush to brush out the fabric along the grain.
5. Rinse the top with plenty of fresh water and allow to dry.
6. Recoat the fabric top with Swissvax Lotos Protectant.

## INSTRUCTIONS FOR USE

1. Wash the top.
2. Apply Protecton evenly with a dry cloth or a Swissvax Wax Applicator (black), pressing firmly.
3. Allow to work in for 20 minutes.
4. Buff the surface, using a clean Swissvax Cloth and applying gentle pressure.





## A CLEAR VIEW

16

VINYL CLEAN



### Cleaning vinyl windows

Use Swissvax Vinyl Clean for regular cleaning of vinyl windows. It will keep your vinyl windows flexible and clear for years to come.

VINYL CLEAR



### Restoring vinyl windows

Flexible vinyl rear windows are extremely scratch-sensitive and tend to become yellow and dull with age. Our Swissvax Vinyl Clear was developed for gentle, non-damaging care and restoration of flexible vinyl windows. Small to medium-sized scratches disappear and the window becomes transparent again.





## INSTRUCTIONS FOR USE

1. Shake the bottle well.
  2. Use a Swissvax sponge applicator (black) to apply Vinyl Clean to the inside and outside of the vinyl windows.
  3. Wipe dry with a Swissvax MicroAbsorb microfibre towel (pink).
- > Repeat if necessary

## INSTRUCTIONS FOR USE

1. Use a Swissvax Cotton Applicator (white) to apply Swissvax Cleaner Fluid VC over a small area in an even back-and-forth (not circular) motion. Avoid contact with the roof fabric and remove any residue immediately with a wet Swissvax MicroWash microfibre cloth (yellow).
2. Polish the treated area with short reciprocating strokes using a clean Swissvax Cotton Towel or MicroAbsorb cloth (pink).  
> Repeat 1 + 2 if necessary
3. Warm the supplied Swissvax Plastic Screen Wax with your finger in a gentle circular motion. Apply the wax sparingly with your fingertips to the prepared surface.
4. Wait two minutes and buff to a gloss using a clean Swissvax MicroPolish microfibre cloth (blue) or a Swissvax Cotton Towel.
5. Use Swissvax Vinyl Clean for regular cleaning of vinyl windows. It will prevent your vinyl windows from getting dull and keep them flexible for years to come.



## IMPORTANT

Apply Swissvax Vinyl Clean and/ or Vinyl Clean to both the inside and the outside surfaces of vinyl windows.



## CLEAN AT HEART

18

### ENGINE



#### Engine wash

Although dust and water splashes build up over time, they do not actually damage the engine. The time for an engine wash is after the winter, when water and road salt have splashed up and left a white deposit. The best place to clean the engine is at a commercial self-service carwash. This ensures that cleaning agents and (for older cars) rinsed-off oil do not get into the groundwater. Aggressive products, such as acid-based cold cleaners, should not be used to loosen dirt, however, since they can damage electrical and plastic components. Water-soluble engine cleaners are more suitable. We recommend Swissvax Engine, a concentrate with citrus oil additives, that can be diluted with water.

### MOTOR SHINE



#### Engine sealer

Swissvax Motor Shine seals the engine, accessories, ignition cables, hoses etc., thus protecting them from corrosion, moisture, salt and water splashes. Motor Shine is heatproof, remains flexible and keeps engines looking as good as new.

#### IMPORTANT

Swissvax Motor Shine is not suitable for motorcycle engines. Use Swissvax Nano Express instead.



### INSTRUCTIONS FOR USE

1. Protect the distributor, coil and spark plugs with plastic film.
2. Fill a Swissvax Mixing Bottle up to the «1» mark with Engine concentrate.
3. Add the correct amount of water for the desired concentration («1:1» for a heavily soiled engine bay, «1:2» for normal soiling, and «1:3» for exhaust stains on exterior paintwork).
4. Spray the Engine solution evenly onto cool, dry surfaces and allow to work in for 3 minutes.
5. Carefully remove oil, soot and other deposits using a Swissvax Detail Brush, reapplying Engine cleaner occasionally.
6. Spray with plenty of clean water to rinse thoroughly.
7. Remove the plastic film and dry the engine with compressed air, if possible.

### INSTRUCTIONS FOR USE

1. Carefully clean the engine with Swissvax Engine.
2. Shut off the ignition to avoid any risk of short-circuiting! Protect any surrounding paintwork and body parts.
3. Spray Swissvax Motor Shine onto completely dry and cool surfaces.
4. Spray on evenly in several thin layers to produce a continuous glossy film.
5. Leave to dry for 15–30 minutes.

## WASH DAY

### CAR BATH



#### CARE TIP

Please avoid washing with a sponge, since no matter how carefully you rinse out your sponge, a few dirt particles (fine sand grains etc.) always remain trapped in the pores and can cause fine scratches on your paint finish.

A Swissvax Waschpudel™ wash pad, on the other hand, can be washed after each use and is guaranteed free of residue for the next wash.

#### For washing away from home...

try the Swissvax Smart Bucket – a collapsible 20-litre bucket that will fit behind the seat of even the smallest roadster.

#### For fast-action drying...

use a Swissvax Hydralip (made of special medical-grade silicone) developed for drying vehicle paint finishes. It is so easy to handle that the tiresome process of drying can be completed in a fraction of the time that it used to take.

#### Automatic car washes

An automatic car wash is no problem for a paint surface once it has been pre-cleaned, provided modern textile rollers are used and not nylon brushes. Nylon brushes cause scratches similar to those produced by 2000-grit sandpaper! Hand washing, however, is the gentlest way to care for the paint finish. Old sponges and aggressive cleaning agents should be kept well away from the paintwork. Your paint finish will be far safer with a Waschpudel™ wash pad and plenty of soft water.





## Washing the car

A thorough but gentle wash is the ideal starting point for all other work. Unfortunately, many car shampoo products erode the paintwork over time due to the degreasing agents they contain. The outdated recommendation to wash without shampoo is also wrong. Without a shampoo, the wash solution has no way to encapsulate and "transport" the dirt away. We therefore recommend Swissvax Car Bath, a paintwork-friendly shampoo concentrate that effectively breaks the bond between the dirt and the paint surface. Its pH-neutral formula guarantees that your high-quality Swissvax wax finish will not be affected.

## Insects

The best procedure is to soak a Swissvax Cotton Towel in lukewarm water and place it over the insect deposits for five minutes. Then wash off with Car Bath solution and a Swissvax MicroWash microfibre cloth (yellow). Do not rub! Also do not use insect sponges or the like which cause micro-scratches in the paint finish.

## IMPORTANT

Never wash a vehicle in the full sun and always use enough water. Always keep the whole paintwork wet with water/Car Bath solution while the car is being washed.

## INSTRUCTIONS FOR USE

1. Fill two 20-litre buckets with warm water. Add one capful of Swissvax Car Bath to one of the buckets.
2. Hose the vehicle down with plenty of clean water.
3. Using a Swissvax Waschpudel™ wash pad and generous amounts of water, wash the vehicle from top to bottom, avoiding circular movements. Start with the roof, boot and bonnet. Always rinse the Waschpudel™ wash pad out first in the bucket of clean water and then dip it into the bucket of Car Bath solution before continuing washing. This helps prevent annoying scratches from washing.
4. Rinse off the vehicle with generous amounts of clean water.
5. Dry the vehicle with a Swissvax Hydralip and/or a Swissvax Micro-Dry microfibre towel.

## PLASTICS

### PLASTIC WASH



### Deep cleaning

It's just like skin care: first comes the deep cleaning, followed by the care. Pore-deep cleansing is essential if you want to achieve a pristine finish. We recommend that you use Swissvax Plastic Wash for a perfect, deep-acting clean and then follow this up with Swissvax Protecton or Protecton Matt to condition the surface.

### PROTECTON



### Bring out the beauty in plastic

Plastic components contain various additives, including plasticisers to enhance suppleness and fillers to determine surface quality. Over time, heat, frost, solvent-based cleaning agents, UV radiation and other environmental influences affect the plastics, making them appear dry and brittle. To counteract this problem, the industry has developed deep-acting care products for plastics. These products are often based almost solely on silicon, however. Swissvax Protecton Matt is a preservative and care product enriched with jojoba and other essential oils for interior plastics. It restores moisture that the plastic has lost and returns the original matt sheen to the plastic parts.

Protecton is an emulsion containing gloss and care agents with active detergents and light-protection additives and is suitable for use on both interior and exterior surfaces. The plastic is given a silky gloss finish.



### USING PLASTIC WASH

1. Wipe the plastic or vinyl surface to be cleaned with a damp Swissvax MicroWash microfibre cloth (yellow).
2. Spray Swissvax Plastic Wash onto a clean, Swissvax MicroWash microfibre cloth (yellow) or directly onto the plastic surface and apply evenly over the entire surface.

3. Rub into the surface applying medium pressure. You may need to spray on more Swissvax Plastic Wash and change the cloth, depending on the degree of soiling. Structured surfaces can be cleaned using a Swissvax Cleaning Brush.

4. Polish with a slightly damp Swissvax Cloth.



### USING PROTECTON MATT

1. Remove any dirt from the upholstery or plastic fittings. To clean soiled plastic parts we recommend using Swissvax Plastic Wash. Dishwashing detergents often achieve excellent results on steering wheels and gearsticks, since they are powerful degreasing agents.
2. Shake the bottle thoroughly.
3. Apply Swissvax Protecton Matt evenly with substantial pressure, using a Swissvax Sponge applicator (black).
4. After approx. 20 minutes the matt finish will become visible.

### USING PROTECTON

1. Wash plastic or vinyl surfaces and allow to dry.
2. Apply Swissvax Protecton with a Swissvax Sponge applicator (black).
3. Allow to work in. The milky-white film will turn a deep black.



### CARE TIP

Best results are obtained when Swissvax Protecton or Protecton Matt is applied with a Swissvax Sponge applicator (black). For hard-to-reach areas (e.g. ventilation nozzles), try our Swissvax Detail Brush.

For time-saving cleaning and care of exterior plastics, Swissvax Nano Express also achieves impressive results on all materials.





## RUBBER

### SEAL FEED



#### Rubber is not plastic

To avoid any confusion: rubber has nothing to do with plastics. On the contrary, rubber is a natural product, which means that most plastic care products should not be used on rubber parts. As rubber becomes brittle, cracked and unsightly over the years, regular care of all rubber parts is very important.

#### Rubber seals

Swissvax Seal Feed was developed exclusively for rubber and keeps rubber seals pliable for years. Even hardened seals become soft and flexible again after several applications. It also prevents seals from freezing up in the winter.

### PNEU



#### Large rubber surfaces

Oxidation resulting from oxygen, UV radiation, salt, etc. makes rubber look unpleasantly brownish, "sulphured out" and generally neglected. Swissvax Pneu is an emulsion containing gloss and care agents with active detergents and light-protection additives. It replenishes lost moisture in the rubber mixture and protects the surface from discoloration and cracking.





## INSTRUCTIONS FOR USE

1. Wipe seals with a damp Swissvax Cloth.
2. Apply Swissvax Seal Feed evenly using a Swissvax Sponge applicator (black) or with your fingers, working in one direction only.
3. Allow Swissvax Seal Feed to work in for 30 minutes.
4. Once seals have been treated, buff gently with a clean Swissvax Cloth.



## INSTRUCTIONS FOR USE

1. Clean rubber surfaces and allow them to dry.
2. Simply spray on Swissvax Pneu or apply it with a Swissvax Pneu-Brush or Swissvax Puck applicator (black).
3. Allow to work in for 5 minutes. The milky-white film will take on a deep black colour.
4. Wipe off any residue on the body and/or wheels with a clean Swissvax Towel.





## BRILLIANT RESULTS

26

### First impressions

The perfect paint finish on your car is like a calling card, so you should exercise care in choosing the right products for optimum results. After all, a good craftsman only works with high-quality tools. And when you do this work you are investing the most valuable asset you have – your time.

### Enjoying your car

With the correct approach to vehicle care – regular washing followed by reapplication of preservatives – you have nothing to fear from environmental influences, in summer or in winter. Appropriate, regular car care will not only increase but also extend the enjoyment you derive from your car. In fact, everything you do for your car's "skin" is guaranteed to pay off – in terms of a longer life span (combined with a very attractive appearance) and many miles on the road together.

### The best for the best

To achieve this, choose a premium car care system like Swissvax – admittedly the most expensive, but also the best car wax in the world. No wonder Swissvax products are used world-wide to care for many of the most valuable vintage cars and manufacturers such as Rolls-Royce, Spyker, Lamborghini and Mercedes-Benz offer their customers high-quality Swissvax products in their own car care ranges.

### Maintaining the "as new" look

To keep your new car looking new from the very start, we highly recommend that you have the paintwork sealed with Swissvax wax upon purchase. This way, the "as new" appearance is preserved for much longer and reliable protection of the paintwork is guaranteed. It's best to be on the safe side.

### «Swissvax Paint Protection System» Protecting your car from day one

Nowadays, new cars are often dispatched with merely a thin plastic film for protection. Your local dealer saves on the finish work and you receive a new car with virtually unprotected paintwork. When you purchase a new vehicle, ask your brand dealer to have the vehicle treated with the Swissvax Paint Protection System prior to delivery or place the vehicle in the capable hands of a Swissvax Car Care Centre. Treat yourself to peace of mind in the knowledge that you can provide the subsequent car care using the appropriate products.



## The Swissvax concept

The essence of the Swissvax concept is that all the products have proved their effectiveness in practice and logically overlap and complement one another. This ensures that all parts of your vehicle can be kept in immaculate condition down to the very last detail.

### Non-abrasive paintwork preparation

The first step towards a perfectly finished vehicle is the essential pre-treatment with Swissvax Cleaner Fluid Regular. Cleaner Fluid Regular is abrasive-free, using instead "heavy" polishing oils to give the vehicle paintwork a baby-smooth surface and ensuring the necessary foundation for subsequent sealing with a Swissvax carnauba wax of your choice by completely removing any layers of old wax and other deposits.

### Scratched paintwork

Minor scratches are removed with Cleaner Fluid Regular. The following pages will show you how and with what Cleaner Fluid products you can solve problem cases too.

### Easy sealing

Sealing your paintwork with Swissvax waxes is both easy and pleasant compared to conventional vehicle polishes. Simply apply a thin layer with the surface of your hand, leave for a few minutes and polish off easily, without annoying residue or never-ending polishing. Swissvax waxes have the significant benefit of leaving no white residue on the edges or in bodywork crevices.

## Problems?

Some problems can be solved, others cannot – and we are well-placed to advise you. In difficult cases, satisfactory results often depend on in-depth material expertise and many years of practical experience. So, before you resort to trial and error and risk further damage, contact your local Swissvax representatives, who will be happy to analyse the problem professionally and provide you with appropriate advice, free of charge.

### Improving your skills

If you would like to learn more about car care, contact us for information about our Swissvax exterior and interior care seminars at which professionals pass on important know-how about the right way to achieve that special, lasting shine.

### Maintenance schedule!

We recommend that you follow the maintenance schedule table overleaf to ensure that your car always looks the way you want it – simply perfect!

*Always use Swissvax "Opaque" products for matt paintwork.*



## MAINTENANCE SCHEDULE

CAR				
Cleaner Fluid				
Wax				
Wax				
Cleaner Fluid				
Wax				
Wax				
Cleaner Fluid				
Wax				
Wax				
Cleaner Fluid				
Wax				
Wax				
Cleaner Fluid				
Wax				
Wax				



### Professional care

You can provide the best protection for your four-wheeled investment with a systematic maintenance schedule. This will ensure that your car consistently looks good and best retains its value. Use the table above to schedule your car care.

### We recommend:

**Cleaner Fluid and wax**  
every 6–12 month  
(depending on mileage)

**Wax reapplication**  
every 3–6 month  
(wachsabhängig)

**Car wash**  
weekly



## PAINTWORK PREPARATION NEW CARS

29

CLEANER FLUID REGULAR



### Pretreatment

For pretreatment use Swissvax Cleaner Fluid Regular. This solution preserves and nourishes the paintwork using “heavy” polishing oils and contains no abrasives. It eliminates minor scratches, tar, tree resin and old wax completely. However, Swissvax Cleaner Fluid Regular stops at the underlying paint layer without scratching it.

Although conventional polishes do the same job with abrasives, the disadvantage with them is that they start scouring away at the paint as their abrasive particles continue working through a new paint layer.



### INSTRUCTIONS FOR USE

1. Wash and dry the car thoroughly.
2. Apply Swissvax Pneu or Protecton to all exterior plastic parts before starting work on the paintwork. This ensures that the plastic parts will not absorb the Cleaner Fluid or wax.
3. Using a Swissvax Cotton Applicator (white), apply Cleaner Fluid Regular liberally in an even back-and-forth, cross-wise motion (not a circular motion) over a complete area, e.g. the bonnet or a wing.
4. Spread the cleaner fluid, applying light pressure (with back-and-forth strokes) until the surface is evenly “nourished”.
5. Do not let the fluid dry. Wipe off the damp Cleaner Fluid Regular with a fresh, dry Swissvax Towel and polish the treated paint area with short, back-and-forth movements (this makes most painted surfaces squeak). Keep turning the cloth to expose a clean surface. Alternatively use a Swissvax Micro-Fluffy, but not standard, commercially available microfibre cloths, as these might scratch the surface!

### IMPORTANT

After treating your vehicle with Swissvax Cleaner Fluid, do not drive it until the paintwork has been sealed with a Swissvax wax!

Always use Swissvax “Opaque” products for matt paintwork.

## PAINTWORK RE-CONDITIONING USED CARS

30

### PAINT RUBBER SET



### Extended pretreatment

Prepare all the paintwork, frontal areas and possibly wing mirrors using Swissvax Paint Rubber. This is a mineral-based elastic compound that gently removes deposits from the paint surface without harming the paint itself. Swissvax Paint Rubber effortlessly removes mist marks, paint overspray and industrial residue, leaving a fine smooth paint surface. We recommend that you pretreat your car with the Paint Rubber from a vehicle age of six months.

Follow this up by treating the paintwork with Swissvax Cleaner Fluid Regular. This solution preserves and nourishes the paintwork using "heavy" polishing oils and contains no abrasives. It removes minor scratches, tar, tree resin and old wax completely. However, Swissvax Cleaner Fluid Regular stops at the underlying paint layer without scratching it.

Although conventional polishes do the same job with abrasives, the disadvantage with them is that they start scouring away at the paint as their abrasive particles continue working through a new paint layer.

### CLEANER FLUID REGULAR





## USING PAINT RUBBER & QUICK FINISH

1. Wash and dry the car thoroughly.
2. Spray Swissvax Quick Finish onto the surface to be treated and glaze the Paint Rubber back and forth over the surface, applying light pressure.
3. Make sure any irregularities, such as paint overspray or rust film, have been removed completely. If not, repeat the process until the surface is absolutely smooth to the touch.
4. Swissvax Paint Rubber will become darker over time as it removes dirt. To restore a clean surface, knead the rubber until the dirt has been folded into the interior. Your Swissvax Paint Rubber can be reused repeatedly until it is completely saturated with dirt particles.
5. Next, clean the treated paintwork with Swissvax Cleaner Fluid Regular and seal it with Swissvax wax.



## IMPORTANT

After treating your vehicle with Swissvax Cleaner Fluid, do not drive it until the paintwork has been sealed with a Swissvax wax!

## USING CLEANER FLUID REGULAR

1. Wash and dry the car thoroughly (only if the Paint Rubber was not used beforehand).
2. Apply Swissvax Pneu or Protecton to all exterior plastic parts before starting work on the paintwork. This ensures that the plastic parts will not absorb any Cleaner Fluid or wax.
3. Using a Swissvax Cotton Applicator pad (white), apply Cleaner Fluid Regular liberally in an even back-and-forth, crosswise motion (not a circular motion) over a complete area, e.g. the bonnet or a wing.
4. Spread the cleaner fluid applying light pressure (with back-and-forth strokes) until the surface is evenly "nourished".
5. Do not let the fluid dry. Wipe off the damp Cleaner Fluid Regular with a fresh, dry Swissvax Towel and polish the treated paint area with short, back-and-forth movements (this makes most painted surfaces squeak). Keep turning the cloth to expose a clean surface. Alternatively use a Swissvax Micro-Fluffy, but not standard, commercially available microfibre cloths, as these might scratch the surface!



Always use Swissvax "Opaque" products for matt paintwork.

## PAINTWORK RE-CONDITIONING MINOR TO MEDIUM SCRATCHES

32

### PAINT RUBBER SET



### Intensive pretreatment

Pretreat all paint surfaces using the Swissvax Paint Rubber. This is a mineral-based elastic compound that gently removes deposits from the paint surface without harming the paint itself. Swissvax Paint Rubber effortlessly removes mist marks, paint overspray and industrial residue, leaving a fine smooth paint surface.

### CLEANER FLUID MEDIUM



Swissvax Cleaner Fluid Medium is a slightly abrasive polish which is suitable for use on paintwork that is slightly weathered or has minor to medium wear. It removes fine to medium scratches, overspray and slightly matt patches.

Cleaner Fluid Medium is applied evenly to the affected area, using substantial pressure, so that the micro-granules it contains rub against one another, wearing themselves down and making the polish progressively finer. This enables you to work on individuals areas, beginning each time with a powerful abrasive effect which is gradually reduced through rubbing, thus producing a finer and smoother surface. The abrasive effect of Cleaner Fluid Medium can be easily controlled to ensure that only an absolute minimum of the surface layer is removed.





## USING PAINT RUBBER & QUICK FINISH

1. Wash and dry the car thoroughly.
2. Spray Swissvax Quick Finish onto the surface to be treated and glaze the Paint Rubber back and forth over the surface, applying light pressure.
3. Make sure any irregularities, such as paint overspray or rust film, have been removed completely. If not, repeat the process until the surface is absolutely smooth to the touch.
4. Swissvax Paint Rubber will become darker over time as it removes dirt. To restore a clean surface, knead the rubber until the dirt has been folded into the interior. Your Swissvax Paint Rubber can be reused repeatedly until it is completely saturated with dirt particles.
5. Next, clean the treated paintwork with Swissvax Cleaner Fluid Regular and seal it with Swissvax wax.



## USING CLEANER FLUID MEDIUM

1. Wash and dry the car thoroughly (only if the Paint Rubber was not used beforehand).
2. Apply Swissvax Pneu or Protecton to all exterior plastic parts before starting work on the paintwork. This ensures that the plastic parts will not absorb any Cleaner Fluid or wax.
3. Apply Swissvax Cleaner Fluid Medium evenly to the paint surface and rub in with substantial pressure using a Swissvax Puck applicator (black). Rubbing causes the product's micro-granules to wear each other down, which produces a progressively finer abrasive polish.
4. Work on one small section at a time, each no larger than 1m<sup>2</sup>. Then buff to a high gloss with a Swissvax Towel or MicroAbsorb microfibre cloth (pink).



## IMPORTANT

After treating your vehicle with Swissvax Cleaner Fluid, do not drive it until the paintwork has been sealed with a Swissvax wax!

Always use Swissvax "Opaque" products for matt paintwork.

## PAINTWORK RE-CONDITIONING MAJOR SCRATCHES

### PAINT RUBBER SET



#### Problem cases

Pretreat all horizontal surfaces, front parts and, if necessary, the side mirrors with Swissvax Paint Rubber. Swissvax Paint Rubber effortlessly removes mist marks, paint overspray and industrial residue, leaving a fine smooth paint surface.

The pretreatment of weathered or scratched paintwork requires great care and attention to detail. Take your time and do not rush. Above all, proceed systematically. With severely weathered painted surfaces, it is necessary to remove the top layers of paint mechanically.

Swissvax Cleaner Fluid Strong is a medium to strong abrasive polish which mechanically removes scratches, overspray, severe oxidation or corrosion (e.g. from bird droppings) from the painted surface.

### CLEANER FLUID STRONG + MEDIUM



Like Cleaner Fluid Medium, Cleaner Fluid Strong is applied evenly to the affected areas of the paintwork, using substantial pressure, so that the micro-granules wear each other down, making the polish progressively finer. This enables you to work on individual areas, beginning each time with a powerful abrasive effect which is gradually reduced through rubbing, thus producing a finer and smoother surface.

After you have treated the problem areas with Cleaner Fluid Strong, prepare them for wax sealing using Cleaner Fluid Medium (not Cleaner Fluid Regular!).

**USING****PAINT RUBBER & QUICK FINISH**

1. Wash and dry the car thoroughly.
2. Spray Swissvax Quick Finish onto the surface to be treated and glaze the Paint Rubber back and forth over the surface, applying light pressure.
3. Make sure any irregularities, such as paint overspray or rust film, have been removed completely. If not, repeat the process until the surface is absolutely smooth to the touch.
4. Swissvax Paint Rubber will become darker over time as it removes dirt. To restore a clean surface, knead the rubber until the dirt has been folded into the interior. Your Swissvax Paint Rubber can be reused repeatedly until it is completely saturated with dirt particles.
5. Next, clean the treated paintwork with Swissvax Cleaner Fluid Regular and seal it with Swissvax wax.

**USING****CLEANER FLUID MEDIUM**

1. Apply Swissvax Cleaner Fluid Medium evenly to the painted surface and rub in with substantial pressure using a Swissvax Puck applicator (black). Rubbing causes the product's micro-granules to wear each other down, which produces a progressively finer abrasive polish.
2. Work on one small section at a time, each no larger than 1m<sup>2</sup>. Then buff to a high gloss with a Swissvax Towel or MicroAbsorb microfibre cloth (pink).

**USING****CLEANER FLUID STRONG**

1. Wash and dry the car thoroughly (only if the Paint Rubber was not used beforehand).
2. Apply Swissvax Pneu or Protecton to all exterior plastic parts before starting work on the paintwork. This ensures that the plastic parts will not absorb any Cleaner Fluid or wax.
3. Apply Swissvax Cleaner Fluid Strong evenly to the paint surface and rub in with substantial pressure using a Swissvax Puck applicator (black). Rubbing causes the product's micro-granules to wear each other down, which produces a progressively finer abrasive polish.
4. Work on one small section at a time, each no larger than 1m<sup>2</sup>. Then buff to a high gloss with a Swissvax Cloth.
5. Repeat the process with Cleaner Fluid Medium (not Cleaner Fluid Regular), so that any residue from Cleaner Fluid Strong is dissolved! The paintwork is then ready for sealing with a Swissvax wax.

**IMPORTANT**

After treating your vehicle with Swissvax Cleaner Fluid, do not drive it until the paintwork has been sealed with a Swissvax wax!

*Always use Swissvax "Opaque" products for matt paintwork.*



## PAINTWORK PREPARATION MACHINE POLISH

36

### PAINT RUBBER SET



### Fast and professional

Pretreat all surfaces with the Swissvax Paint Rubber. This is the basis for fine, smooth and clean paintwork.

Swissvax Cleaner Fluid Professional is a high-performance polish with variable abrasive power for use with a rotary polisher. It is designed for use on new paintwork and on painted surfaces with light to medium wear. Cleaner Fluid Professional, a one-stage polish, optimises conventional two-stage polishing processes on freshly sprayed paintwork by eliminating the need for follow-up polishing, while still enhancing the surface quality. Holograms and fog are removed completely due to the state-of-the-art nano-polishing technology. The time savings are impressive and it opens up significant new potential for treating used vehicles.

### CLEANER FLUID PROFESSIONAL



Select a polisher with adjustable speed (rotary or semi-orbital machines). To remove scratches, use higher revolutions in conjunction with coarser polishing sponges or sheepskin polishing pads. To remove holograms and swirl marks, select a lower speed and use soft sponge polishing pads. Our application specialists will be pleased to advise you competently and free of charge. You can contact them via telephone and e-mail or speak to them personally during a visit to our Swiss production factory or one of our international branches.



SWISS WAXMAKERS SINCE 1930  
  
**SWISSVAX™**  
HIGH PERFORMANCE CAR CARE  
HAND MADE IN SWITZERLAND

**USING  
PAINT RUBBER & QUICK FINISH**

1. Wash and dry the car thoroughly.
2. Spray Swissvax Quick Finish onto the surface to be treated and glaze the Paint Rubber back and forth over the surface, applying light pressure.
3. Make sure any irregularities, such as paint overspray or rust film, have been removed completely. If not, repeat the process until the surface is absolutely smooth to the touch.
4. Swissvax Paint Rubber will become darker over time as it removes dirt. To restore a clean surface, knead the rubber until the dirt has been folded into the interior. Your Swissvax Paint Rubber can be reused repeatedly until it is completely saturated with dirt particles.
5. Next, clean the treated paintwork with Swissvax Cleaner Fluid Regular and seal it with Swissvax wax.



**IMPORTANT**

After treating your vehicle with Swissvax Cleaner Fluid, do not drive it until the paintwork has been sealed with a Swissvax wax!

**USING  
CLEANER FLUID PROFESSIONAL**

1. Wash and dry the car thoroughly (only if the Paint Rubber was not used beforehand).
2. Apply Swissvax Pneu or Protecton to all exterior plastic parts before starting work on the paintwork. This ensures that the plastic parts will not absorb any Cleaner Fluid or wax.
3. **To remove minor scratches**, use a machine polisher at higher speed in conjunction with Cleaner Fluid Professional Regular and a Swissvax polishing pad "Medium".
4. **To remove slight holograms**, use a machine polisher at low speed in conjunction with Cleaner Fluid Professional Regular and a Swissvax polishing pad "Fine".
5. **Polishing:** For the applications specified in items 3 and 4, place the sponge pad on the centre of the polisher. First moisten the sponge pad slightly with Quick Finish or water. Squeeze 6–8 ml of the product onto the outer section of the sponge pad and spread evenly with your finger. Start the polisher and bring it into position on the surface to be treated. Work in a crosswise motion for approx. 20–60 seconds per area until the product becomes transparent. Use a Swissvax MicroAbsorb microfibre cloth (pink) to buff up. Repeat the entire process, if necessary. The paintwork is then ready for sealing with a Swissvax wax.



*Always use Swissvax "Opaque" products for matt paintwork.*

## PAINTWORK CONDITIONING MACHINE POLISH AND SEVERE SCRATCHING

### PAINT RUBBER SET



### Professional solutions for problematic cases

Pretreat all painted surfaces with the Swissvax Paint Rubber. The Swissvax Paint Rubber effortlessly removes mist marks, paint overspray and industrial residue, leaving a fine smooth paint surface.

The pretreatment of weathered or scratched paintwork requires great care and attention to detail. Take your time and do not rush. Above all, proceed systematically. With severely weathered painted surfaces, it is necessary to remove the top layers of paint mechanically.

Swissvax Cleaner Fluid Strong is a medium to strong abrasive polish which mechanically removes scratches, overspray, severe oxidation or corrosion (e.g. from bird droppings) from the painted surface.

After you have treated the problematic areas with Cleaner Fluid Strong, prepare them for wax sealing using Cleaner Fluid Professional.

### CLEANER FLUID STRONG & PROFESSIONAL



**USING****PAINT RUBBER & QUICK FINISH**

1. Wash and dry the car thoroughly.
2. Spray Swissvax Quick Finish onto the surface to be treated and glaze the Paint Rubber back and forth over the surface, applying light pressure.
3. Make sure any irregularities, such as paint overspray or rust film, have been removed completely. If not, repeat the process until the surface is absolutely smooth to the touch.
4. Swissvax Paint Rubber will become darker over time as it removes dirt. To restore a clean surface, knead the rubber until the dirt has been folded into the interior. Your Swissvax Paint Rubber can be reused repeatedly until it is completely saturated with dirt particles.
5. Next, clean the treated paintwork with Swissvax Cleaner Fluid Regular and seal it with Swissvax wax.

**IMPORTANT**

After treating your vehicle with Swissvax Cleaner Fluid, do not drive it until the paintwork has been sealed with a Swissvax wax!

**USING****CLEANER FLUID STRONG AND PROFESSIONAL**

1. Wash and dry the car thoroughly (only if the Paint Rubber was not used beforehand).
2. Apply Swissvax Pneu or Protecton to all exterior plastic parts before starting work on the paintwork. This ensures that the plastic parts will not absorb any Cleaner Fluid or wax.
3. **To remove scratches**, use a machine polisher at medium speed in conjunction with Cleaner Fluid Professional Strong or Medium and a Swissvax polishing pad "Strong" or "Medium" (depending on the severity of the scratches). Then treat the surface with Cleaner Fluid Professional Regular and a pad "Fine" at lower speed.
4. **To remove holograms**, use a machine polisher at lower speed in conjunction with Cleaner Fluid Professional Regular and a pad "Medium". Subsequently repeat the process with Cleaner Professional Regular or Fine and a pad "Fine".
5. **Polishing**: Place the sponge pad on the centre of the polisher. First moisten the sponge pad slightly with Quick Finish or water. Squeeze 6–8 ml of the product onto the outer section of the sponge pad and spread evenly with your finger. Start the polisher and bring it into position on the surface to be treated. Work in a crosswise motion for approx. 20–60 seconds per area until the product becomes transparent. Use a Swissvax MicroAbsorb microfibre cloth (pink) to buff up. Repeat the entire process, if necessary. The paintwork is then ready for sealing with a Swissvax wax.

*Always use Swissvax "Opaque" products for matt paintwork.*



## PREMIUM VEHICLE SEALING



### PLEASE NOTE

Swissvax waxes are great value for money – a little goes a very long way. Be sure to apply them very sparingly. A thin layer is quite sufficient as long as it is continuous.



Used like this, **one tin should easily last for 15 applications.** Your vehicle will then benefit from highly durable quality sealing that is much more economical in terms of effort and cost than it may first appear.

### INSIDER TIP



The classical way to apply Swissvax wax to the paint finish is directly with the palms of one's hands. First take a small amount of wax from the container and rub it into your palms (remove any rings beforehand). This way, you avoid applying too much wax and are able to feel any irregularities still present on the surface.

### The art of formulation

It's just like skin care: first comes the deep cleaning, followed by the care depending on skin type. Pore-deep cleansing is the essential basis for perfect adhesion and effective results. The internationally popular Swissvax concept follows the same principle. Our unique Cleaner Fluid is used to achieve immaculately deep cleaning. It is unique because this solution preserves and nourishes the paintwork without the need for abrasives. Scratched and weathered paintwork can be pretreated with Cleaner Fluid Medium or Strong.

The next step is to seal the painted surface. Waxes with a carnauba wax content of as much as 100% may provide a high degree of shine, but are also known to lack durability and tend towards streaking and dust formation. The art of correct wax formulation is therefore of decisive importance. The correct blending of the carnauba wax with other waxes, PTFE, fruit oils, etc. is imperative to create a wax compound which not only produces outstanding results but also will last up to a year.

The combination of making the waxes by hand and tailoring them to the needs of different types of paintwork and application requirements therefore forms the basis for perfect care products.

It is no wonder then that Swissvax is the brand of choice for vehicle manufacturers such as Rolls-Royce Motorcars, Automobili Lamborghini, Mercedes-Benz Classic, Spyker Cars and Automobiles Bugatti.





**USING**

**UNIVERSAL- & SPEZIALWACHSE**

1. Apply Swissvax wax with a Swissvax Sponge applicator (black) or with the palm of your hand to form an even wax film on the paintwork.
2. Let the wax cure in for several minutes, but make sure that it does not dry.
3. Gently wipe the wax film with a Swissvax Micro-Fluffy. Keep turning the towel to expose a clean surface.
4. Try not to touch the paintwork for three hours and, at the next opportunity, leave the vehicle in the sun after waxing. You will be able to observe the lustre deepening increasingly as the hours go by.
5. If necessary, buff the surface again quickly using a clean Swissvax MicroFluffy.



**TIP**

If you notice a "streaky" fog of wax on the paintwork during or after application, buff the surface again with a clean Swissvax MicroPolish micro-fibre cloth (blue) and allow the wax to work in for a few minutes longer next time.

**USING**

**PTFE-WACHS SHIELD**

1. Pretreat the paintwork with Swissvax Paint Rubber (see index) and Swissvax Cleaner Fluid Regular (see index). The smoother the surface to be waxed, the greater the PTFE effect will be, which is why Swissvax Shield Wax normally is supplied in a Set with Swissvax Paint Rubber and Quick Finish.
2. Proceed as described in «Universal and Special Waxes».



**PAINTWORK PRETREATMENT !**

Before a Swissvax wax is applied for the first time, it is imperative that the paintwork be pretreated with Swissvax Cleaner Fluid Regular (see index) to ensure that the wax is able to bond with the paintwork.



*Always use Swissvax "Opaque" products for matt paintwork.*

## UNIVERSAL WAXES

### SWISSVAX WAXES



#### **Swissvax «Onyx»**

##### **Standard wax for all colours**

Onyx is the standard wax out of the broad wax portfolio of Swissvax for all types of paintwork. Thanks to its 30 % by volume of pure Brazilian Grade One Carnauba it produces a streak-free gloss on all paintworks and enhances the surface with best beading characteristics. Use Cleaner Fluid before application.



#### **Swissvax «Mirage»**

##### **Increased shine and protection for all lacquer systems**

Premium wax with 40% by volume pure Brazilian grade one carnauba wax for increased paintwork protection. Enriched with oil extracts of avocado and tropical fruit, this formulation offers lasting paintwork protection, especially in winter and periodic use of car washes (textile car wash systems). Use Cleaner Fluid before application.



## UNIVERSAL WAXES

43

SWISSVAX WAXES



### Swissvax «Concorso»

**Our famous concours wax for deep reflective surfaces**

Enriched with passion fruit and apricot extracts and containing 50% by volume ultra pure yellow grade one carnauba wax this highly concentrated formulation gives your paintwork a luster ordinarily encountered only on prize-winning classics. Its deep and intense shine makes experienced concours enthusiasts speechless with amazement. Use Cleaner Fluid before application.

#### TIP

If you notice a "streaky" fog of wax on the paintwork during or after application, buff the surface again with a clean Swissvax MicroPolish microfibre cloth (blue) and allow the wax to work in for a few minutes longer next time.



### Swissvax «Mystery»

**The original secret formula**

This secret formula which was originally reserved for Hans Anwander's private use, contains 55% by volume of the purest unbleached grade one carnauba wax. Mystery contains high concentrations of wax esters, wax alcohols and long-chain fatty acids. It is enriched with walnut, kiwi and vanilla extracts and produces a sensational shine experience even on older one-pass paint finishes. Use Cleaner Fluid before application.

#### PAINTWORK PRETREATMENT !

Before a Swissvax wax is applied for the first time, it is imperative that the paintwork be pretreated with Swissvax Cleaner Fluid Regular (see index) to ensure that the wax is able to bond with the paintwork.

*Always use Swissvax "Opaque" products for matt paintwork.*

## UNIVERSAL WAXES

### SWISSVAX WAXES



#### Swissvax «Divine»

Inspired by the gleam of a christmas tree bauble



Each year, we create a special selection of carnauba waxes, with over 60% by volume of the purest white grade-one carnauba wax from Northern Brazil, for a mere handful of collectors and enthusiasts. No efforts are spared to tailor these high-gloss waxes to the requirements of what are mostly very old paintwork finishes.

Enriched with peach, walnut and vanilla extracts, these waxes are hand-poured and delivered in an exclusive, personally engraved acrylic casket. Use Cleaner Fluid before application.



#### Swissvax «Crystal Rock»

Paul Dalton's State-of-the-Art Car Wax

Paul Dalton is renowned world-wide for his exceptional vehicle care talent. Reports about his «£5000 carwash» have been aired on television screens from Europe to Japan. His dedication and perfectionism have been displayed in his care of supercars in Europe, America, Asia and the Middle East and he is famous for his meticulous attention to detail. When it came to developing his own «Crystal Rock» carnauba wax, it was clear to Paul Dalton that only the most exclusive manufacturer was worth considering – the small Swiss wax specialist Swissvax. Created with over 76% of pure, ivory grade-one North Brazilian carnauba wax by volume, this state-of-the-art wax product has one of the highest percentages of carnauba wax in the world. Despite this, «Crystal Rock» remains very easy, fast and pleasant to apply. Not only does it achieve an excellent water-repellent finish, but it also produces a stunningly radiant gloss on any paintwork, with a deep warmth and a mellow mirror-like finish, leaving even experienced concours enthusiasts lost for words. Use Cleaner Fluid before application.



## SPECIAL WAXES

45

SWISSVAX WAXES



### Swissvax «Zuffenhausen»

#### Special wax for Porsche finishes

Offering 40% by vol. of pure North Brazilian ivory grade one carnauba wax it caters for the specific paintwork care and protection needs of modern Porsche cars (from the G-model onwards) and ensures that your Porsche shines in splendour with best beading characteristics. Use Cleaner Fluid before application.

#### TIP

If you notice a "streaky" fog of wax on the paintwork during or after application, buff the surface again with a clean Swissvax MicroPolish microfibre cloth (blue) and allow the wax to work in for a few minutes longer next time.



### Swissvax «Blau-Weiss»

#### Special wax for BMW paint systems

A premium wax containing 40% by volume pure ivory and yellow carnauba wax from Northern Brazil. Specifically developed to match the requirements of the paint systems used on BMW cars (from the 70s onwards) it guarantees great longevity of the wax coats. Use Cleaner Fluid before application.

#### PAINTWORK PRETREATMENT !

Before a Swissvax wax is applied for the first time, it is imperative that the paintwork be pretreated with Swissvax Cleaner Fluid Regular (see index) to ensure that the wax is able to bond with the paintwork.

Always use Swissvax "Opaque" products for matt paintwork.



## SPECIAL WAXES

### SWISSVAX WAXES



#### **Swissvax «Scuderia»**

##### **Special wax for Italian vehicles**

Scuderia is a premium wax, containing grade-one pure yellow carnauba wax (40% by volume), specially developed for the paint systems used on Italian vehicles (such as Alfa Romeo, Ferrari, Fiat, Lancia and Maserati). For modern Lamborghini cars, we recommend Swissvax Mirage or Concorso. Use Cleaner Fluid before application.



#### **Swissvax «Viking»**

##### **Special wax for Volvo and Saab**

Specially created for Northern Europe to give added protection in winter from the much stronger road grime due to the extended use of spike tyres, it also eliminates the chalky surface appearance of darker Saab and Volvo colours. With over 30% by volume of Brazilian yellow carnauba wax it produces a streak-free gloss. Use Cleaner Fluid before application.



**SPECIAL WAXES**

SWISSVAX WAXES



**Swissvax «Samurai»**  
Special wax for Japanese  
paint systems

It addresses the special needs of post 1988 Japanese paint systems. Samurai wax gives added UV protection, produces a streak-free gloss and enhances the paintwork surface with best beading. Use Cleaner Fluid before application.

**TIP**

If you notice a "streaky" fog of wax on the paintwork during or after application, buff the surface again with a clean Swissvax MicroPolish microfibre cloth (blue) and allow the wax to work in for a few minutes longer next time.



**Swissvax «Reflexus»**  
Special wax for Lexus paintwork

With a high concentration of pure ivory carnauba wax from Northern Brazil (40% by volume), this formulation is tailor-made for the Lexus brand (from 1988 LS400 models). It restores the shine to older models with dark paintwork and removes that slightly "milky" appearance. Use Cleaner Fluid before application.

**PAINTWORK PRETREATMENT !**

Before a Swissvax wax is applied for the first time, it is imperative that the paintwork be pretreated with Swissvax Cleaner Fluid Regular (see index) to ensure that the wax is able to bond with the paintwork.

Always use Swissvax "Opaque" products for matt paintwork.



## SPECIAL WAXES

48

### SWISSVAX WAXES



#### **Swissvax «Glacier»**

##### **Premium wax for white cars**

Glacier is our premium wax for all white paint systems. With its high percentage of grade-one pure Brazilian carnauba wax (40% by volume), it achieves an impressive gloss finish and reliable protection from insect deposits and black water-run marks. Use Cleaner Fluid before application.



#### **Swissvax «Shield»**

##### **with non-stick PTFE "Frying pan effect"**

An innovative special Carnauba wax, providing the vehicle through enrichment with non-stick PTFE with a refined protective shield. A shield that withstands even the harshest conditions through the proverbial «frying pan effect». Use Cleaner Fluid before application.



Spyker at the Automobilsalon Geneva  
Presentation of Spyker Car Care Kit by Swissvax





## SPECIAL WAXES

49

SWISSVAX WAXES



### Swissvax «356»

**Special wax for synthetic enamel paintwork**

This is a special wax, with a high level of pure carnauba wax (40% by volume) plus vanilla and citrus oil extracts, which has been developed specifically for the care and protection requirements of original synthetic enamel paints on German classic cars from the 1950s (e.g. Porsche 356, 550; Mercedes 190 SL, 300 SL; Borgward). Use Cleaner Fluid before application.

#### TIP

If you notice a "streaky" fog of wax on the paintwork during or after application, buff the surface again with a clean Swissvax MicroPolish microfibre cloth (blue) and allow the wax to work in for a few minutes longer next time.



### Swissvax «Nitro»

**Special wax for nitrocellulose lacquers**

Swissvax Nitro is the standard wax for old nitrocellulose lacquers. With its grade-one pure Brazilian carnauba wax (30% by volume), it produces a haze-free shine, while preventing the "chalking" appearance often seen on nitro lacquers. Use Cleaner Fluid before application.

#### PAINTWORK PRETREATMENT !

Before a Swissvax wax is applied for the first time, it is imperative that the paintwork be pretreated with Swissvax Cleaner Fluid Regular (see index) to ensure that the wax is able to bond with the paintwork.

Always use Swissvax "Opaque" products for matt paintwork.



## SATIN MATT PAINTWORK CARE

SWISSVAX «OPAQUE»



### 1 CAR BATH «OPAQUE» WASHING

1. Add one capful of Swissvax Car Bath Opaque to a 20-litre bucket of warm (not hot!) water.
2. Hose the vehicle down with plenty of clean water.
3. Using a Swissvax Waschpudel™ wash pad and generous amounts of water, wash the vehicle from top to bottom. Only wash small areas of the vehicle at a time, rinsing out the Waschpudel™ wash pad frequently.
4. Hose the vehicle down with plenty of clean water.
5. Dry the vehicle with a Swissvax Micro-Dry microfibre towel.



### 2 PRE-CLEANER «OPAQUE» CLEANING THE PAINTWORK

1. Wash and dry the vehicle. Finger-prints and other dirt can be removed with Swissvax Pre-Cleaner Opaque and a Swissvax Micro-Absorb microfibre cloth (pink).
2. Spray Swissvax Pre-Cleaner Opaque onto the paintwork from a distance of approx. 20 cm.
3. Immediately spread the fluid evenly with a double-folded Swissvax Micro-Absorb microfibre cloth (pink), but do not allow to dry.
4. Turn the Swissvax MicroAbsorb microfibre cloth (pink) and wipe the surface dry with the clean side.



### IMPORTANT

Conventional polishes, waxes and insect removers should not be used on matt paintwork and will most likely cause damage. Also the Swissvax products Paint-Rubber and all Cleaner Fluids as well as Mechanic Paint Repair are not designed to be used on Matt Paintwork. Please only use products which were specifically developed for matt paintwork like the Swissvax «Opaque» product line which will not damage the matt surface appearance.



### 3 SWISSVAX WACHS «OPAQUE» PAINT SEALING

1. Apply Swissvax «Opaque» wax with a Swissvax applicator (black) or with the palm of your hand to form an even wax film on the paintwork.
2. Let the wax stand for only a few seconds. DO NOT LET DRY!
3. Immediately wipe-off the wax film with a Micro-Fluffy towel. Keep turning the cloth to expose a clean surface.
4. Try not to touch the paintwork with your hands for 3 hours. (The car can be driven, however.)

### 4 QUICK FINISH «OPAQUE» QUICK CARE

1. Shake the bottle thoroughly before use.
2. Spray Swissvax Quick Finish onto the paintwork from a distance of approx. 20 cm.
3. Immediately spread the fluid evenly with a clean Swissvax Towel, but do not allow to dry.
4. Wipe off with a clean Swissvax MicroPolish microfibre cloth (blue).





## PRECIOUS METALS

METAL POLISH



### Swissvax Metal Polish cleans, polishes and protects all metals

Swissvax Metal Polish removes deposits, rust and oxidation efficiently, quickly and gently. It produces a high gloss and offers effective long-term protection.

### Chrome-plated parts

These are crucial and elegant highlights on any vehicle. Contrary to popular opinion, however, chrome requires regular care: the chromium layer is extremely thin and can corrode if not maintained. Be sure to use a polish that is free of abrasives.

Unfortunately, chrome plating is often polished with overly aggressive agents, marring its spotless gloss with ugly hairline scratches.

### Nickel and brass radiators

These should be treated with a polish that offers long-term protection from re-oxidation. If low-quality polishes are used, re-polishing is often necessary after the first rainfall, as the gloss is dulled by ugly water marks.

### Aluminium

Aluminium is very sensitive to overly aggressive polishes. Only a well-balanced product like Swissvax Metal Polish will produce that long-lasting gloss which is so important on cylinder heads, valve covers, wheels, etc.

### WARNING

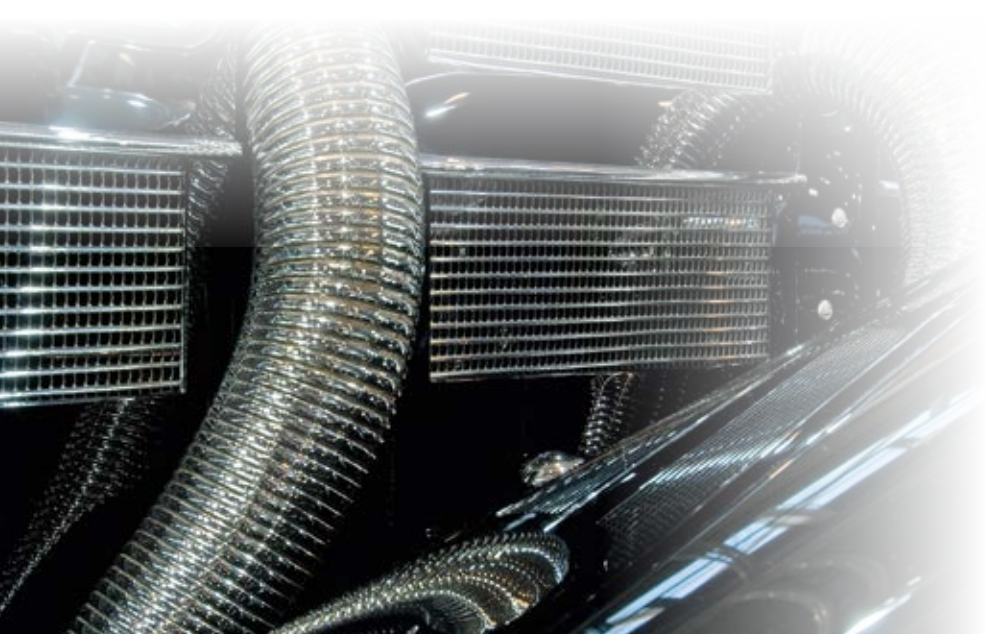


Do not use Metal Polish on chrome-plated plastic parts.



## INSTRUCTIONS FOR USE

1. Test the product on a concealed area first!
2. Apply Swissvax Metal Polish to the metal surface with a disposable Swissvax polishing cloth, using an even back-and-forth (not circular) motion.
3. Rub gently until the surface has a nice gloss.
4. Buff to a high gloss with a Swissvax MicroPolish cloth (blue).
5. Optionally, you can also seal the surface with a Swissvax wax and then buff to a shine with a Swissvax Micro-Absorb microfibre cloth (pink).



## CRYSTAL-CLEAR

CRYSTAL



### Super vision

Most manufacturers of car care products tend to pay little attention to vehicle glass surfaces – wrongly, because the windows are just as important a part of the well-kept appearance of your vehicle as the paintwork and wheels. Environmental factors, such as silicone, tar, insects, etc., leave traces on window exteriors that can adversely affect visibility, especially in the windscreen wiper area when it is raining. Swissvax Crystal is a ready-to-use glass cleaner that will delight even the experienced concours d'élégance enthusiast. It cleans in a flash, with no streaking and or damage to special tints or films on your windows.

54

RAIN-X



### Exterior window protection

Rain-X makes water simply roll off glass surfaces – for perfectly clear, streak-free visibility in the rain, even with less efficient windscreen wipers. This is particularly important at night with oncoming traffic. Insect residue can be removed with only a damp cloth. Rain-X is resistant to automatic car washes.



### INSTRUCTIONS FOR USE

1. Spray Swissvax Crystal evenly onto the glass surface or a Swissvax Micro-glass microfibre cloth (white) and spread over the entire surface.
2. Polish the glass surface with a second Micro-Glass microfibre towel (white).



### CARE TIP

To remove any stubborn insect dirt, spray Quick Finish onto windscreen and pre-clean with Paint Rubber.

### INSTRUCTIONS FOR USE

1. Clean the exterior glass surfaces with Swissvax Crystal.
2. Moisten standard kitchen paper with Rain-X and apply to exterior glass surfaces. Leave for approx. 5 minutes. Also apply to the windscreen wipers.
3. Wipe off the haze with a moist Swissvax Cloth and buff to a high gloss with a dry Swissvax Towel.



## INNER BEAUTY IN FABRICS



### INSTRUCTIONS FOR USE

1. Fill a Swissvax Mixing Bottle to the «1:2» mark with carbonated mineral water.
2. Add Swissvax Fabric concentrate to the «1:3» mark.
3. Gently shake the Mixing Bottle.
4. Spray the Swissvax Fabric solution evenly over the areas to be treated and allow to work in for 1-2 minutes.
5. Gently rub the surface with a soft brush or a soft, clean Swissvax Cloth and then let it dry.
6. Vacuum the dry surface thoroughly with a vacuum cleaner.
7. Always reproof the cleaned surfaces (e.g. Swissvax Lotos Protectant spray for textiles).

### Interior cleaning

Always begin by removing loose dirt with a vacuum cleaner, using the narrow nozzle. It is advisable to remove the carpets and mats for this purpose. Carpets/mats can also be cleaned effectively with Swissvax Fabric. Then wash plastic and upholstered vinyl surfaces with Swissvax Plastic Wash. Vacuum-clean fabric seats before cleaning with Swissvax Fabric.

### Fabrics – a closer look

Swissvax Fabric is a concentrated cleaning agent for vehicle textiles which can be precisely mixed with carbonated mineral water in the appropriately marked Swissvax Mixing Bottle. The ready-to-use solution can then be sprayed on for thorough, easy and fabric-friendly cleaning of textiles in fabric seat covers, vehicle carpets, interior roofs and fabric tops. The advantage over foam-based fabric cleaners is that Swissvax Fabric can be applied more finely, avoiding “cleaning rings” on the surface cleaned. Used with the widely popular Swissvax Mixing Bottle, Swissvax Fabric is an unbeatable agent for freshening up and cleaning all types of fabrics.





## INNER BEAUTY IN ALCANTARA

57

**ALCANTA CLEANER**

### INSTRUCTIONS FOR USE

1. Spray Alcantara Cleaner onto a clean sponge applicator or directly onto the surface to be cleaned. Clean the entire surface with a dabbing action, applying medium pressure.
2. Clean stubborn dirt by spraying on Alcantara Cleaner and working it in with a SwissVax Cleaning Brush in a circular motion without pressure.
3. Pat dry with a soft cotton cloth. Do not rub!



### Interior cleaning

Always begin by removing loose dirt with a vacuum cleaner, using the narrow nozzle. It is advisable to remove the carpets and mats for this purpose. Carpets/mats can also be cleaned effectively with Swissvax Fabric. Then wash plastic and upholstered vinyl surfaces with Swissvax Plastic Wash. Vacuum-clean seats before cleaning with Swissvax Fabric.

### Alcantara – a closer look

Seat covers and interior coverings in Alcantara (synthetic suede) are relatively robust. However, care is needed when cleaning Alcantara. The use of conventional cleaners is generally problematic, as they contain solvents which can weaken the Alcantara fibres. Alcantara Cleaner consists of biodegradable ingredients and has been specially developed for the regular cleaning of synthetic suede fabrics.

## INNER BEAUTY IN LEATHER

LEATHER CLEANER / FORTE



### INSTRUCTIONS FOR USE LEATHER CLEANER / FORTE

1. Shake the bottle thoroughly before use.
2. Spray Leather Cleaner onto a clean cotton towel or directly onto the surface to be cleaned. Applying medium pressure, wipe the surface in one direction only.
3. Clean stubborn soiling by spraying on Leather Cleaner and working it in with a Swissvax Cleaning Brush in a circular motion.
4. Wipe dry in one direction with a soft cotton cloth. Do not rub!
5. Allow leather to dry completely and then treat with Leather Milk.

### Leather cleaning

Swissvax Leather Cleaner is a highly effective, gentle-acting leather cleaner containing biodegradable active ingredients and enriched with glycerine. This effective but mild pH-neutral formula can be used for regular cleaning of all leather surfaces in your vehicle and will not attack or harm the the leather as conventional solvent-based leather cleaners may do. Due to the use of solvents, the latter cause the leather to age more quickly and may even remove the colour. Applied using a Swissvax Cleaning Brush, Swissvax Leather Cleaner is the ideal solution for achieving perfectly clean leather, ready for subsequent treatment with a leather care or sealing product. Swissvax Leather Cleaner Forte is a stronger formula with enhanced cleaning power and is recommended for more stubborn or older soiling, either for cleaning individual spots or complete areas. Its strong cleansing power is immediately visible on light-coloured leathers.

### IMPORTANT

Do not use Leather Cleaner on buffalo skin or suede.



## INNER BEAUTY IN LEATHER

59

### LEATHER MILK



### Leather care

Swissvax Leather Milk is an easy-to-use, economical and powerful leather care product containing emulsifiers for all smooth leathers. To restore and preserve the natural moisture balance of the leather, Leather Milk is enriched with vitamin E, glycerine and UV filters. Leather Milk is applied using a Swissvax Cotton Applicator (white), after the surface has been cleaned thoroughly with Swissvax Leather Cleaner (Standard or Forte). After being spread evenly over the leather surface, it will soak in in one to two hours. It leaves no marks on clothing and requires no arduous re-polishing. Reapply every six months.

### INSTRUCTIONS FOR USE LEATHER MILK

1. Remove dirt and old deposits from the leather with Swissvax Leather Cleaner.
2. Shake the bottle thoroughly before use.
3. Apply Swissvax Leather Milk evenly with a dry cotton towel or a Swissvax Cotton Applicator (white).
4. Leave to soak in.



### IMPORTANT

Do not use Leather Milk on buffalo skin or suede.

### NOTE

To revive dull leather, we recommend using Swissvax Leather Healer, an individually customised leather dye.

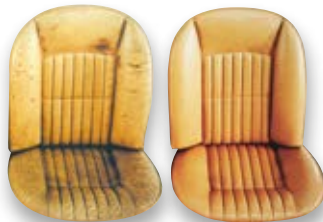
## INNER BEAUTY IN LEATHER

### LEATHER HEALER



#### INSTRUCTIONS FOR USE

1. First test the product on a concealed spot to observe changes.
2. Clean the leather with Swissvax Leather Cleaner. Degrease and clean the areas to be treated with leather benzene (or lighter fluid).
3. Shake the Swissvax Leather Healer bottle thoroughly.
4. Apply Leather Healer with a sponge and in a circular motion (avoiding streaks) or apply with a dabbing motion if a deeper layer is required. Repeat the process several times, allowing the Healer to dry between applications.
5. The next day, treat the leather with Swissvax Leather Milk.



#### Restoring the colour of your leather

Some parts of your interior leather, such as driver seats, side mouldings, entrance panel covers, steering wheels and gearsticks, are by nature subject to greater use and therefore will inevitably start to show signs of wear, even in vehicles that are well looked after. Although this is only relatively harmless wear and tear, such as scratches or colour loss, which can be easily rectified with the right dye, it can still spoil the overall impression of the interior.

Swissvax Leather Healer is a special leather dye for restoring the colour of leather surfaces. It is easy to apply with a small sponge, sets automatically and does not rub off (no cream). It is finely and highly pigmented, producing a rich colour without leaving a thick layer of pigment, as is often unfortunately the case with spray-on leather dyes. Leather Healer ensures that the colour of your leather is accurately and evenly restored without losing that unique leather look and feel. After applying Leather Healer, you can continue to care for the leather using the perfectly matched Swissvax products.

Leather Healer is available in 46 standard colours or can be customised to meet individual requirements. Contact us to find the right colour for your application or simply send us a small leather sample so that we can match your colour precisely.



## INNER BEAUTY IN LEATHER

61

### LEATHER GLAZE



### Leather sealing

Swissvax Leather Glaze leather seal ensures that new leather remains as good as new. It dries within minutes, leaving no shine or change in colour. With the application of Leather Glaze, wear and tear on leather can be greatly reduced, because the colourless protective film minimises the effects of friction. The driver's seat, steering wheel and gearstick are the areas most exposed to noticeable wear, which can become visible soon after the purchase of a new car. These areas should be treated early on with Leather Glaze. Leather Glaze is also ideal for protecting light-coloured leather from denim marks. Even though they will still appear, they can then be easily removed with Leather Cleaner and cause no lasting damage, as is otherwise the case.

### INSTRUCTIONS FOR USE

1. Clean the leather with Swissvax Leather Cleaner. Degrease and clean areas to be treated with leather benzine (or lighter fluid).
2. After cleaning or dyeing the leather, apply a thin coat of Leather Glaze carefully using a clean sponge applicator, working from seam to seam.
3. Repeat the above step, if necessary.
4. Staining from clothing may still appear, but it can now be easily removed as it is left on the Leather Glaze coating and not on the leather itself.
5. The next day, treat the leather with Swissvax Leather Milk.

## INNER BEAUTY IN LEATHER



### Matt or glossy?

Any collector or vehicle enthusiast knows the annoying yet unavoidable problem that interior surfaces, such as steering wheels or gearsticks, can start to look shiny and worn from frequent use, leading in time to that unappealing “greasy” shine. These areas stand out from the overall impression of the vehicle interior in an unattractive and neglected manner.

This difference in shine spoils the entire appearance of the vehicle interior. This was reason enough to seek a remedy for this problem! Swissvax Leather Gloss Corrector Matt is an innovative solution for those “greasy” problem areas. It is simply applied to the cleaned leather, using a small

### INSTRUCTIONS FOR USE

1. Clean the leather with Swissvax Leather Cleaner. Degrease and clean the areas to be treated with leather benzine (or lighter fluid).
2. Shake the Leather Gloss Corrector bottle thoroughly.
3. First test the product on a concealed spot to observe changes.
4. Apply Leather Gloss Corrector with a sponge and in a circular motion (avoiding streaks) or apply with a dabbing motion if a deeper layer is required. Depending on the result, repeat the process several times, allowing time to dry between applications.

sponge, and gives the treated surfaces a matt finish that once again matches the immaculate condition of the car interior. In terms of function, Leather Gloss Corrector Glossy is the opposite of Gloss Corrector Matt. Absolutely colourless, it restores the shine to dulled surfaces so that they blend in with the rest of the leather interior, for a homogeneous look. Instructions for use is easy and the level of gloss can be gradually increased as required, by repeating the process until the match is perfect. If a single piece of leather is replaced with a new piece that looks too matt, for example, Gloss Corrector Glossy provides a welcome, harmonising effect.



## INNER BEAUTY IN LEATHER

63

ELEPHANT MUSEUMSFORMEL



### Raindrop repellent and leather preserver

The leather interior in convertibles, the seat cushions on the driver and passenger door sides – in short, all leather coverings which need to be protected from raindrops – should be treated regularly with Elephant leather preserver. In contrast to animal fats, blubber oil or cheap neatsfoot oil, Elephant leather preserver does not turn brown in the sun, does not oxidise or provide a breeding ground for mould. Not without reason is Elephant leather preserver used for leather care in leading museums today.

### INSTRUCTIONS FOR USE

1. Clean leather with Swissvax Leather Cleaner.
2. Using a cloth, massage the leather preserver sparingly into the leather.
3. Treat very old leather on both sides if possible.
4. Repeat application on a regular basis.

### IMPORTANT

Do not use Elephant on buffalo skin or suede.



## INNER BEAUTY IN LEATHER

### LEATHER SOFTENER



#### INSTRUCTIONS FOR USE

1. Clean all **smooth leathers** with Swissvax Leather Cleaner.
2. If necessary, carefully roughen up the surface with the leather sanding pad.
3. Apply Swissvax Leather Softener with a sponge applicator or cloth. Allow the leather to rest for one to two days. A milder form of treatment is to repeat the process sparingly several times rather than performing one generous application.

#### Softening up hardened leather

There are two reasons why leather hardens. One is age and loss of moisture. Leather can become increasingly harder and less supple over time through lack of care, due to lack of movement and re-moisturising.

Another cause is shrinking due to the effect of heat. The plant-tanned leather that used to be used for vehicle interiors hardened and shrank at temperatures from 70°C upwards. The less re-moisturising leather receives, the lower the temperature will be at which it begins to shrink.

A certain degree of softness can be restored to hardened leather, but shrunk leather remains shrunk. This is bad news for dashboards in particular which are difficult and time-consuming to disassemble. However, it is still advisable to treat shrunk leather with Leather Softener to protect it and make it more resistant prior to disassembly. Stiff leather coverings can be moistened with Leather Softener. Leather with a very smooth or closed pore surface should be rubbed down first with our leather sanding pad, to ensure that the Leather Softener can soak in properly. Leather Softener is a synthetic oil which does not decompose like animal oils which oxidise after a short time.





## PRECIOUS WOODS

65

WOOD POLISH



### Wood care

Fine wood interior trims require special care. Most high-grade wood trims are protected with several coats of clear lacquer. The care product for them is Swissvax Wood Polish which has been inside knowledge among concours d'élégance enthusiasts for years. This incredible wax for both gloss and matt wood finishes contains ultra-pure yellow Brazilian grade-one carnauba wax for an incomparable shine, coupled with long-lasting nourishment and protection.

### INSTRUCTIONS FOR USE

1. Using a Swissvax Cotton Applicator (white), apply Cleaner Fluid Regular to the wood surface.
2. Work into the wood surfaces with even, back-and-forth movements.
3. Buff up with a clean Swissvax Towel.
4. Warm the Swissvax Wood Polish with your finger in a gentle, circular motion and apply it sparingly, without pressure, with your fingertip. Allow it to work in for 5 minutes.
5. Polish to a high gloss with a clean Swissvax MicroPolish microfibre cloth (blue).

### TIPP

Slight scratches can be removed with Swissvax Cleaner Fluid Medium before applying Wood Polish.





## THE MISSING LINK – EXTERIOR

QUICK FINISH



### INSTRUCTIONS FOR USE

1. Shake the bottle thoroughly before use.
2. Spray Swissvax Quick Finish onto the paintwork from a distance of approx. 20 cm.
3. Immediately spread the fluid evenly with a clean Swissvax Towel. Do not allow to dry.
4. Polish to a high gloss with a clean Swissvax MicroPolish microfibre cloth (blue).

### The wonders of nature...

... are not always so wonderful. There are many very natural elements that can potentially damage your paintwork – from acid rain, to bird and insect droppings, to tree resins. Despite all our modern technologies, we have still not found a way to eliminate the effect of these attacks on vehicle paintwork. Therefore, bird droppings and insect deposits should always be removed from the paintwork as quickly as possible. Plenty of clean water, a Swissvax Cotton Towel and a little shampoo are usually all that is needed to eliminate these nasty spots. If there is no water to hand, we recommend using Swissvax Quick Finish for quick cleaning in between times.

Swissvax Quick Finish is the missing link between washing and waxing. In just seconds Quick Finish removes dust, grease, dirt or bird droppings – without the need for water. It is absolutely harmless to a Swissvax wax finish and to any paint surfaces. This makes Quick Finish the ideal constant companion in your vehicle, keeping it perfectly clean and immediately eliminating harmful contaminants, such as bird droppings or tree resin.



# QUICK CARE



## THE MISSING LINK – INTERIOR

67

**QUICK INTERIOR FINISH**

### A great interior finish in minutes

Swissvax Quick Interior Finish easily maintains the look and feel of vehicle interiors. Removing dirt, dust, ashes, fingerprints etc. from plastics, painted surfaces, switches, leather, metal your interior finish will look sharp and clean in minutes.

### INSTRUCTIONS FOR USE

1. Remove loose dirt with a vacuum cleaner, using a narrow nozzle.
2. Shake the bottle thoroughly.
3. Spray Swissvax Quick Interior Finish onto a clean Swissvax MicroWash microfiber cloth (yellow) or directly onto the surface to be treated.
4. Turn the microfiber cloth to expose a dry surface and gently wipe the treated surfaces.



# QUICK CARE

Always use Swissvax "Opaque" products for matt paintwork.

## THE THIRD ELEMENT

**A great shine in minutes**

Swissvax Nano Express is a fast-acting care product for in between times, giving the entire exterior of your vehicle a perfect finish regardless of the material.

Achieve that clean look and an immaculate finish in just minutes – not hours! High-speed paintwork care takes 30 to 40 minutes. Nano Express quickly cleans, seals and restores the shine to your paintwork, plastic parts, wheel rims, acrylic windows, aluminium and chrome-plated parts in one single step. Simply apply Nano Express directly to the surface to be treated or spray it onto a Swissvax Sponge applicator (black), spread it evenly straight away and immediately buff to an high gloss with a Swissvax MicroAbsorb microfibre cloth (pink) – and your car has a perfect finish!

As car wash swirl and hairline scratches can no longer be seen by the naked eye, Swissvax Nano Express is also ideal for quick conditioning of used cars. Please note that Nano Express is no substitute for the traditional Swissvax vehicle care regime.

QUICK CONDITIONING



The effects last up to one month and/ or two car washes. The lasting results for which Swissvax products are famed can only be achieved with conventional Swissvax treatments, such as the three-stage paintwork care process, with Paint Rubber, Cleaner Fluid and wax, or the Swissvax wheel care programme.

Nano Express is therefore regarded as the third element between waxing and washing, satisfying your previously unmet need to maintaining your car's pristine finish even when you simply have no time.

The Nano Express Set is supplied in a practical bag, containing a 250 ml bottle of Nano Express, a high-quality microfibre cloth and a Swissvax Sponge applicator (black).

## NOTE

Swissvax Nano Express is not recommended for use on old nitro

lacquers, synthetic enamel paintwork or old, chalky and dull paint surfaces. In these cases use the traditional Swissvax multi-stage treatment.

## INSTRUCTIONS FOR USE

1. Shake the bottle thoroughly before use.
2. Spray Swissvax Nano Express onto the surfaces to be treated from a distance of approx. 30 cm.
3. Immediately spread the fluid evenly with a clean Swissvax Sponge applicator (black).
4. Polish to a high gloss with a clean Swissvax MicroAbsorb microfibre cloth (pink).




# QUICK CONDITIONING

Always use Swissvax "Opaque" products for matt paintwork.

A great shine in minutes 68  
 Acid rain 66  
 Alcanta Cleaner 57  
 Alcantara 57  
 Alfa Romeo 46  
 Aluminium 52  
 Application specialists 27  
 Autobahn 10  
 Bird droppings and insect residue 66  
 BMW paintwork 45  
 Borgward 49  
 Brass 52  
 Car Bath 21  
 Carnauba wax 5, 10, 27, 40, 42, 44, 45, 46, 47, 48, 49  
 Car wash swirl and hairline scratches 68  
 Chrome 52  
 Chrome rims 8  
 Cleaner Fluid Medium 32  
 Cleaner Fluid Professional 36  
 Cleaner Fluid Regular 29  
 Cleaner Fluid Strong 34  
 Cleaning Brush 58  
 Cleaning vinyl windows 16  
 Collapsible 20-litre bucket 20  
 Corrosion 34, 38  
 Crystal 54  
 Dalton Paul 44  
 Denim marks 61  
 Dyeing leather 60  
 Driver seats 60  
 Durability 40  
 Elastic compound 30  
 Elephant Museum Formula 63  
 Engine 18  
 Engine cleaners 18  
 Engine sealer 18  
 Engine wash 18  
 Fabric tops 14  
 Fabric for fabric tops 14  
 Fabric textile cleaner 56  
 Fabric top protection 14  
 Ferrari 46  
 Fiat 46  
 Fine wood interior trims 65  
 Fog 36  
 Fog of wax 41, 43, 45, 47, 49  
 Glass surfaces 54  
 Gearsticks 60  
 Hardened leather 64  
 High-performance polish 36  
 Holograms 36, 37  
 Hydralip 20  
 Industrial residue 30  
 Insect residue 66  
 Interior leather 60  
 Japanese paint systems 47  
 Lancia 46  
 Leather ageing 58  
 Leather brush 58  
 Leather care 59  
 Leather Cleaner 58  
 Leather Cleaner Forte 58  
 Leather dyes 60  
 Leather Glaze 61  
 Leather Gloss Corrector 62  
 Leather Healer 60  
 Leather Milk 59  
 Leather preserver 63  
 Leather sanding pad 64  
 Leather Softener 64  
 Leather sealing 61  
 Lexus paintwork 47  
 Maintenance schedule 28  
 Maserati 46  
 Matt paintwork 50  
 Minor scratches 29, 30, 65  
 Mist marks and paint overspray 30  
 Metal Polish 52  
 MicroWash microfibre cloth 9, 13, 17, 23, 55, 71  
 Mixing Bottle 9, 15, 19, 56  
 Motor Shine 18  
 Nano Express 68  
 Nano-polishing technology 36  
 New cars 26  
 Nickel 52  
 Nitrocellulose laquers 49  
 Nurishing paintwork preservatives 30  
 Opaque line for matt paintwork 50  
 Overspray 38  
 Oxidation 34, 38  
 Paint Protection System 26  
 Paint Rubber 31  
 Paintwork conditioning – minor to medium scratches 32  
 Paint drips 38  
 Paint overspray 31  
 Paint sealing 26, 40, 51  
 Paintwork conditioning – major scratches 34  
 Paintwork conditioning – new cars 29

- 71
- Paintwork conditioning – used cars 30
  - Paintwork finish – machine polish 36
  - Paintwork pretreatment 41, 43, 45, 47, 49
  - Paul Dalton's 44
  - Plastics 22
  - Plastic Wash 23
  - Pneu 12
  - Polisher 36, 37, 39
  - Porsche paintwork 45
  - Precious Metals 52
  - Problems? 27
  - Protecton 22
  - Protecton matt 22
  - PTFE 10, 40, 41, 48
  - Quick care 66
  - Quick cleaning 66
  - Quick conditioning 68
  - Quick Finish 66
  - Quick Interior Finish 67
  - Rain-X 54
  - Restoring the colour of leather surfaces 60
  - Rubber 24
  - Rust film 31
  - Saab 46
  - Scratches 38
  - Seals 25
  - Shampoo 21
  - Shield Wax application 41
  - Side mouldings 60
  - Smart-Bucket 20
  - Smooth leather 59, 63, 64
  - Special waxes 41, 45, 46, 47, 48, 49
  - Steering wheels 60
  - Synthetic enamel paintwork 49
  - Tar 30
  - The art of composition 40
  - The Swissvax concept 27
  - Tree resin 30
  - Tree resins 66
  - Tyre care 12
  - Universal waxes 41, 42, 43, 44
  - Vinyl Clean 16
  - Vinyl Clear 16
  - Vinyl rear windows 16
  - Vinyl tops 14
  - Volvo 46
  - Washing the car 20
  - Wax 356 49
  - Wax Blau-Weiss 45
  - Wax Concorso 43
  - Wax Crystal Rock 44
  - Wax Divine 44
  - Wax Glacier 48
  - Wax Mirage 42
  - Wax Mystery 43
  - Wax Nitro 49
  - Wax Onyx 42
  - Wax Reflexus 47
  - Wax Samurai 47
  - Wax Scuderia 46
  - Wax Shield 48
  - Wax Shield application 41
  - Wax Viking 46
  - Wax Zuffenhausen 45
  - Wax application 40
  - Washing the car 8, 9, 14, 21, 28
  - Washing away from home 20
  - Waschpudel™ 20
  - Washing sponge 20
  - Weathered paintwork 34
  - Wheel cleaning 8, 10
  - Wheel wax 10
  - White cars 48
  - Whitewall tyres 13
  - Wheel 8
  - Windows 54
  - Window protection 54
  - Wood Polish 65
  - Wheel Spray Forte 8
  - Wood surface 65



SWISSVAX INTERNATIONAL

AUSTRALIA · AUSTRIA · BELARUS · BELGIUM · CANADA · CARIBBEAN · CROATIA · CZECH REPUBLIC · FINLAND · FRANCE · GERMANY · GREECE · HONG KONG · HUNGARY · INDIA  
INDONESIA · ITALY · KOREA · LUXEMBOURG · MALAYSIA · MEXICO · NETHERLANDS · NORWAY · PHILIPPINES · POLAND · ROMANIA · RUSSIA · SINGAPORE  
SLOVAKIA · SOUTH AFRICA · SPAIN · SWEDEN · SWITZERLAND · TAIWAN · THAILAND · TURKEY · UNITED KINGDOM · UAE · USA

SWISSVAX AG · CH-8117 FÄLLANDEN · [WWW.SWISSVAX.COM](http://WWW.SWISSVAX.COM)